

TM11-6625-503-24P

---

**TECHNICAL MANUAL**

**ORGANIZATIONAL, DIRECT SUPPORT, AND GENERAL SUPPORT  
MAINTENANCE REPAIR PARTS AND SPECIAL TOOLS LISTS  
(INCLUDING DEPOT MAINTENANCE REPAIR PARTS AND SPECIAL TOOLS)  
FOR**

**TEST SET, COMPASS SYSTEM  
AN/ASM-63**

**(NSN6625-00-886-5915)**

**AND  
SIMULATOR, COMPASS  
TRANSMITTER SM-272/ASN**

**(NSN6625-00-561-74/6)**

---

**HEADQUARTERS, DEPARTMENT OF THE ARMY  
MAY 1977**

**ORGANIZATIONAL, DIRECT SUPPORT, AND GENERAL SUPPORT  
MAINTENANCE REPAIR PARTS AND SPECIAL TOOLS LISTS  
(INCLUDING DEPOT MAINTENANCE REPAIR PARTS AND SPECIAL TOOLS)  
FOR  
TEST SET, COMPASS SYSTEM AN/ASM-63  
(NSN 6625-00-886-5915)  
AND  
SIMULATOR, COMPASS TRANSMITTER SM-272/ASN**

\* NSN 6625-00-561-7476)

*Current as of 4 February 1977*

**REPORTING OF ERRORS**

**You can improve this manual by recommending improvements using DA Form 2028-2 (Test) located in the back of the manual. Simply tear out the self-addressed form, fill it out as shown on the sample, fold it where shown, and drop it in the mail.**

**If there are no blank DA Form 2028-2 (Test) in the back of your manual, use the standard DA Form 2028 (Recommended Changes to Publications and Blank Forms) and forward to the Commander, US Army Electronics Command, ATTN: DRSEL-MA-Q, Fort Monmouth, New Jersey 07703.**

**In either case a reply will be furnished direct to you.**

Table of Contents

SECTION		Page	Illus Figure
	I. INTRODUCTION.....	1	
	II. REPAIR PARTS LIST.....	5	
Group	00 Test Set, Compass System AN/ASM-63(LT-3310B).....	5	1-5
	01 Cable Assembly, Special Purpose, Electrical CX-7516/ASM-63(W3).....	17	6
	02 Cable Assembly, Special Purpose, Electrical CX-7569/ASM-63(W4).....	18	7
	03 Cable Assembly, Special Purpose, Electrical CX-7567/ASM-63(W5).....	19	8
	04 Cable Assembly, Special Purpose, Electrical CX-7591/ASM-63(W6).....	20	9
	05 Cable Assembly, Special Purpose, Electrical CX-7564/ASM-63(W7).....	21	10
	06 Cable Assembly, Special Purpose, Electrical CX-7565/ASM-63(W8).....	22	11
	07 Cable Assembly, Special Purpose, Electrical CX-7568/ASM-63(W9).....	23	12
	08 Cable Assembly, Special Purpose, Electrical CX-6570/ASM-63(W10).....	24	13
	09 Cable Assembly, Special Purpose, Electrical CX-7872/ASM-63(W11).....	25	14
	10 Cable Assembly, Special Purpose, Electrical CX-7562/ASM-63(W12).....	26	15
	11 Cable Assembly, Special Purpose, Electrical CX-7568/ASM-63(W14).....	27	16
	12 Cable Assembly, Special Purpose, Electrical CX-7573/ASM-63(W15).....	28	17
	13 Gyroscope, Compass, Lear Model 2156A (No parts authorized)		
Group	14 Amplifier, Compass, Lear Model 2303A, 3303B (No parts authorized)		
	15 Controller, Compass, Lear Model 3301A (No parts authorized)		
	16 Simulator, Compass Transmitter SM-272/ASN(LT-3316).....	31	18
SECTION	III. Special tools list (Not applicable)		
	IV. National Stock number and part number index.....	34	

\* This manual supersedes TM 11-6625-503-25P, 8 September 1967.

SECTION I  
INTRODUCTION

1. Scope

This manual lists spares and repair parts; special tools; and special test, measurement, and diagnostic equipment (TMDE), and other special support equipment required for performance of organizational, direct support, and general support maintenance of the AN/ASM-68 and SM-272/ASN. It authorizes the requisitioning and issue of spares and repair parts as indicated by the source and maintenance codes.

2. General

This Repair Parts and Special Tools List is divided into the following sections:

a. *Section II. Repair Parts List.* A list of spares and repair parts authorized for use in the performance of maintenance. The list also includes parts which must be removed for replacement of the authorized parts. Parts lists are composed of functional groups in numeric sequence, with the parts in each group listed in figure and item number sequence.

b. *Section III. Special Tools List.* Not applicable.

c. *Section IV. National Stock Number and Part Number Index.* A list, in National item identification number (NIIN) sequence, of all National stock numbers (NSN) appearing in the listings, followed by a list, in alphanumeric sequence, of all part numbers appearing in the listings. National stock numbers and part numbers are cross-referenced to each illustration figure and item number appearance.

3. Explanation of Columns

a. *Illustration.* This column is divided as follows:

(1) *Figure number.* Indicates the figure number of the illustration on which the item is shown.

(2) *Item number.* The number used to identify item called out in the illustration.

b. *Source, Maintenance, and Recoverability (SMR) Codes.*

(1) *Source code.* Source codes indicate the manner of acquiring support items for maintenance, repair, or overhaul of end items. Source codes are entered in the first and second positions of the Uniform SMR Code format as follows:

Code	Definition
PA	Item procured and stocked for anticipated or known usage.
XD	A support item that is not stocked. When required, item will be procured through normal supply channels.

NOTE

Cannibalization or salvage may be used as a source of supply for any items source coded above except those coded XA and aircraft support items as restricted by AR 700-42.

(2) *Maintenance code.* Maintenance codes are assigned to indicate the levels of maintenance authorized to USE and REPAIR support items. The maintenance codes are entered in the third and fourth positions of the Uniform SMR Code format as follows:

(a) The maintenance code entered in the third position will indicate the lowest maintenance level authorized to remove, replace, and use the support item. The maintenance code entered in the third position will indicate one of the following levels of maintenance:

Code	Application/Explanation
O	Support item is removed, replaced, used at the organizational level.
H	Support item is removed, replaced, used at the general support level.
D	Support items that are removed, replaced, used at depot, mobile depot, specialized repair activity only.

(b) The maintenance code entered in the fourth position indicates whether the item is to be repaired and identifies the lowest maintenance level with the capability to perform complete repair (i.e., all authorized maintenance functions). This position will contain one of the following maintenance codes:

Code	Application/Explanation
O	The lowest maintenance level capable of complete repair of the support item is the organizational level.
H	The lowest maintenance level capable of complete repair of the support item is the general support level.
D	The lowest maintenance level capable of complete repair of the support item is the depot level.
Z	Nonreparable. No repair is authorized.

(3) *Recoverability code.* Recoverability codes are assigned to support items to indicate the disposition action on unserviceable items. The recoverability code is entered in the fifth position of the Uniform SMR Code format as follows:

Recoverability codes	Definition
Z	Nonreparable item. When unserviceable, condemn and dispose at the level indicated in position 3.
O	Reparable item. When uneconomically repairable, condemn and dispose at organizational level.
H	Reparable item. When uneconomically repairable, condemn and dispose at the general support level.
L	Reparable item. Repair, condemnation, and disposal not authorized below depot/specialized repair activity level.

*c. National Stock Number.* Indicates the National stock number assigned to the item and will be used for requisitioning purposes.

*d. Part Number.* Indicates the primary number used by the manufacturer (individual, company, firm, corporation, or Government activity), which controls the design and characteristics of the item by means of its engineering drawings, specifications, standards, and inspection requirements to identify an item or range of items.

**NOTE**

When a stock numbered item is requisitioned, the repair part received may have a different part number than the part being replaced.

*e. Federal Supply Code for Manufacturer (FSCM).* The FSCM is a 5-digit numeric code listed in SB 708-42 which is used to identify the manufacturer, distributor, or Government agency, etc.

*f. Description.* Indicates the Federal item name and, if required, a minimum description to identify the item.

*g. Unit of Measure (U/M).* Indicates the standard of the basic quantity of the listed item as used in performing the actual maintenance function. This measure is expressed by a two-character alphabetical abbreviation (e.g., ea, in, pr, etc). When the unit of measure differs from the unit of issue, the lowest unit of issue that will satisfy the required units of measure will be requisitioned.

*h. Quantity Incorporated in Unit.* Indicates the quantity of the item used in the breakout shown on the illustration figure, which is prepared for a functional group, subfunctional group, or an assembly.

4. Special Information

*a. Usable on codes* are shown in the description column. Uncoded items are applicable to all models. Identification of the usable on codes used in this publication are:

*Code*  
2CW  
4Q5

*Used on*  
AN/ASM-63  
SM-272/ASN

*b.* The following publications pertain to the AN/ASM-63, and SM-272/ASN and its components: TM 11-6625-503-12, Test Set, Compass System AN/ASM-63 and Simulator, Compass Transmitter SM-272/ASN  
TM 11-6625-503-34, Test Set, Compass System AN/ASM-63 and Simulator, Compass Transmitter SM-272/ASN

5. How to Locate Repair Parts

*a.* When National stock number or part number is unknown.

(1) *First.* Using the table of contents, determine the functional group within which the item belongs. This is necessary since illustrations are prepared for functional groups and listings are divided into the same groups.

(2) *Second.* Find the illustration covering the functional group to which the item belongs.

(3) *Third.* Identify the item on the illustration and note the illustration figure and item number of the item.

(4) *Fourth.* Using the Repair Parts Listing, find the figure and item number noted on the illustration.

*b.* When National stock number or part number is known.

(1) *First.* Using the Index of National Stock Numbers and Part Numbers, find the pertinent National stock number or part number. This index is in NIIN sequence followed by a list of part numbers in alphameric sequence, cross-referenced to the illustration figure number and item number.

(2) *Second.* After finding the figure and item number, locate the figure and item number in the repair parts list.

6. Abbreviations  
Not applicable.

(Next printed page is 4)

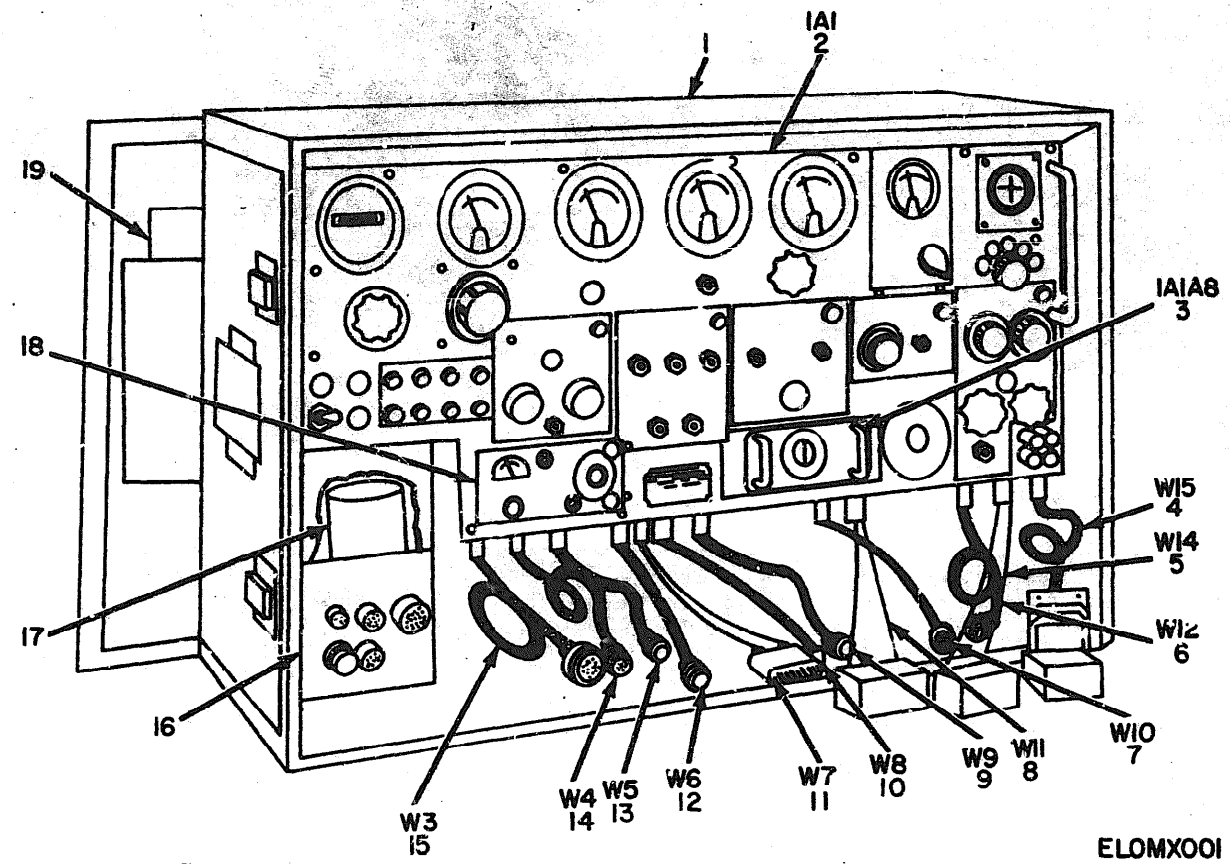


Figure 1. Test Set, Compass System AN/ASM-63(LT-3310B).

SECTION II

TM11-6625-503-24P

(3)  
NATIONAL  
STOCK  
NUMBER

(1) ILLUSTRATION		(2) SMR CODE	(4) PART NUMBER	(5) FSCM	(6) DESCRIPTION  USABLE ON CODE	(7) U/M	(8) QTY INC BY UNIT
(a) FIG NO.	(b) ITEM NO.						
					GROUP 00 TEST SET, COMPASS SYSTEM AN/ASM-63 (LT-331-8)		
1	1	XDMZZ	KCC6116A	01771	CASE	2CW EA	1
1	2	XDMZZ	735137-01-01	35351	PANEL ASSEMBLY	2CW EA	1
1	3	PAMMH	6625-00-561-7476 SM272ASH	00050	SIMULATOR, COMPASS TRANSMITTER SM272ASH	2CW EA	1
1	4	XD000	998968-01-01	35351	CABLE ASSEMBLY, SPECIAL PURPOSE, ELECTRICAL, CX-7573/ASM-63	2CW EA	1
1	5	XD000	998925-01-01	35351	CABLE ASSEMBLY, SPECIAL PURPOSE, ELECTRICAL, CX-7563/ASM-63	2CW EA	1
1	6	XD000	998930-01-01	35351	CABLE ASSEMBLY, SPECIAL PURPOSE, ELECTRICAL, CX-7562/ASM-63	2CW EA	1
1	7	XD000	998961-01-01	35351	CABLE ASSEMBLY, SPECIAL PURPOSE, ELECTRICAL, CX-6570/ASM-63	2CW EA	1
1	8	XD000	998964-01-01	35351	CABLE ASSEMBLY, SPECIAL PURPOSE, ELECTRICAL, CX-7572/ASM-63	2CW EA	1
1	9	XD000	998942-01-01	35351	CABLE ASSEMBLY, SPECIAL PURPOSE, ELECTRICAL, CX-7568/ASM-63	2CW EA	1
1	10	XD000	998937-01-01	35351	CABLE ASSEMBLY, SPECIAL PURPOSE, ELECTRICAL, CX-7565/ASM-63	2CW EA	1
1	11	XD000	998936-01-01	35351	CABLE ASSEMBLY, SPECIAL PURPOSE, ELECTRICAL, CX-7564/ASM-63	2CW EA	1
1	12	XD000	998962-01-01	35351	CABLE ASSEMBLY, SPECIAL PURPOSE, ELECTRICAL, CX-7591/ASM-63	2CW EA	1
1	13	XD000	998941-01-01	35351	CABLE ASSEMBLY, SPECIAL PURPOSE, ELECTRICAL, CX-7567/ASM-63	2CW EA	1
1	14	XD000	998946-01-01	35351	CABLE ASSEMBLY, SPECIAL PURPOSE, CX-7569/ASM-63	EA	1
1	15	XD000	998940-01-01	35351	CABLE ASSEMBLY, SPECIAL PURPOSE, ELECTRICAL, CX-7516/ASM-63	2CW EA	1
1	16	PADDL	6605-00-323-7649 107062-01	35351	AMPLIFIER, COMPASS, 3303A SELECT	2CW EA	1
1	16	PADDL	6605-00-604-5662 126091-01	35351	AMPLIFIER, COMPASS, 3303B SELECT	2CW EA	1
1	17	PADDL	6615-00-098-5309 107063-01	35351	GYROSCOPE, COMPASS, 2156A	2CW EA	1
1	18	PADDL	6605-00-323-7662 107064-01	35351	CONTROLLER, COMPASS, 3801A	2CW EA	1
1	19	XDMZZ	995312-02	35351	PLATE, INSTRUCTION	2CW EA	1

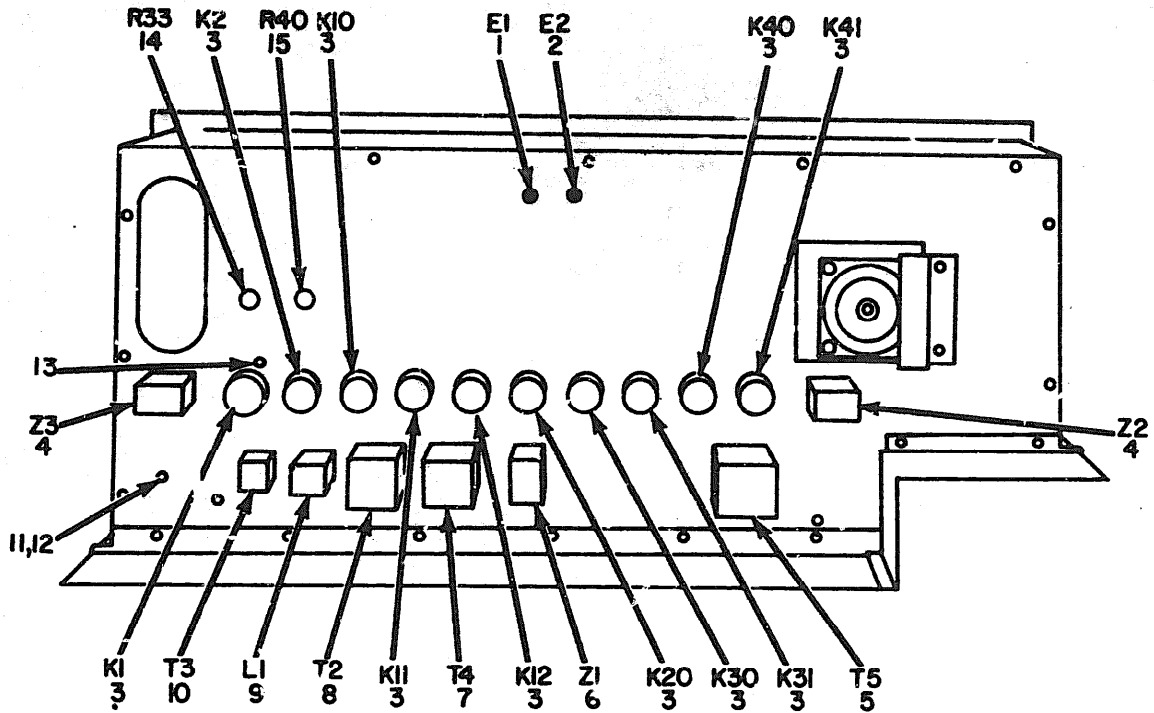


## SECTION II

TM11-6625-503-24P

(1) ILLUSTRATION		(2)	(3)	(4)	(5)	(6)	(7)	(8)
(a) FIG NO.	(b) ITEM NO.	QMR CODE	NATIONAL STOCK NUMBER	PART NUMBER	FSCM	DESCRIPTION	USABLE ON CODE	QTY INC IN UNIT
2	1	XDMZZ		182854	65092	VOLTMETER	2CM	EA 1
2	2	XDMZZ		990234-55	35351	SWITCH, LEVER	2CM	EA 1
2	3	XDMZZ		990234-37	35351	SWITCH, LEVER	2CM	EA 1
2	4	PAMZZ	6625-00-602-3673	992558-01	35351	AMMETER	2CM	EA 1
2	5	PAOZZ	5355-00-160-6893	S-108-64-BB-DD	75376	KNOB	2CM	EA 4
2	6	XDMZZ		103-2	00638	VOLTMETER, ELECTRICAL	2CM	EA 1
2	7	XDMZZ		AN526C632R8	88044	SCREW, MACHINE	2CM	EA 4
2	8	PAMZZ	5826-00-505-3094	MS28027-1	96906	INDICATOR	2CM	EA 1
2	9	PAMZZ	5310-00-081-3081	MS20365-632	96906	NUT, SELF-LOCKING	2CM	EA 4
2	10	XDMZZ		AN526C632R14	88044	SCREW, MACHINE	2CM	EA 4
2	11	PAMZZ	5340-00-813-6901	1007-12	88245	HANDLE, BCM	2CM	EA 2
2	12	PAOZZ	5355-00-160-6056	S-380-64-BB-DD-L	75376	KNOB	2CM	EA 7
2	13	PAOZZ	6240-00-155-7836	MS25237-327	96906	LAMP	2CM	EA 6
2	14	PAMZZ	5930-00-378-2325	MS25089-SCR	96906	SWITCH, PUSH	2CM	EA 1
2	15	PAMZZ	5940-00-356-2493	DF308C	58474	POST, BINDING	2CM	EA 2
2	16	PAMZZ	5940-00-269-2219	DF308C	58474	POST, BINDING	2CM	EA 2
2	17	XDMZZ		990234-49	35351	SWITCH, LEVER	2CM	EA 1
2	18	XDMZZ		1540-4	08674	DIAL, CONTROL	2CM	EA 1
2	19	XDMZZ		994245-01	35351	WASHER, WAVE	2CM	EA 1
2	20	XDMZZ		990234-56	35351	SWITCH, LEVER	2CM	EA 1
2	21	PAMZZ	5325-00-282-8131	A43-030	72794	STUD, TURN LOCK	2CM	EA 2
2	22	XDMZZ		735144-01	35351	PLATE, TRIM	2CM	EA 1
2	23	XDMZZ		990234-06	35351	SWITCH, LEVER	2CM	EA 1
2	24	XDMZZ		990234-114	35351	SWITCH, LEVER	2CM	EA 1
2	25	XDMZZ		990234-117	35351	SWITCH, LEVER	2CM	EA 2
2	26	PAMZZ	5930-00-519-3270	990234-48	35351	SWITCH, LEVER	2CM	EA 1
2	27	XDMZZ		112899-01	35351	PLATE, IDENTIFICATION	2CM	EA 1
2	28	XDMZZ		AN535-2-2	88044	SCREW, DRIVE	2CM	EA 4
2	29	XDMZZ		990234-113	35351	SWITCH, LEVER	2CM	EA 1
2	30	PAMZZ	5930-00-826-0174	990234-01	35351	SWITCH, LEVER	2CM	EA 1
2	31	PAOZZ	5920-00-050-4953	MS90078-10	96906	FUSE	2CM	EA 2
2	32	PAOZZ	5920-00-280-8342	MS90078-9	96906	FUSE	2CM	EA 4
2	33	PAOZZ	5920-00-280-8344	MS90078-7	96906	FUSE	2CM	EA 7
2	34	PAOZZ	6240-00-155-0714	MS25231-313	96906	LAMP	2CM	EA 3
2	35	PAMZZ	5930-00-276-9202	7661-K6	15605	SWITCH, TOGGLE	2CM	EA 1
2	36	XDMZZ		735138-01	35351	PANEL, FRONT	2CM	EA 1
2	37	XDMZZ		33-FHXX-11	31356	METER, FREQUENCY	2CM	EA 1
2	38	PAMZZ	6625-00-825-6170	992411-01	35351	VOLTMETER	2CM	EA 1
2	39	XDMZZ		182855	65092	AMMETER	2CM	EA 1



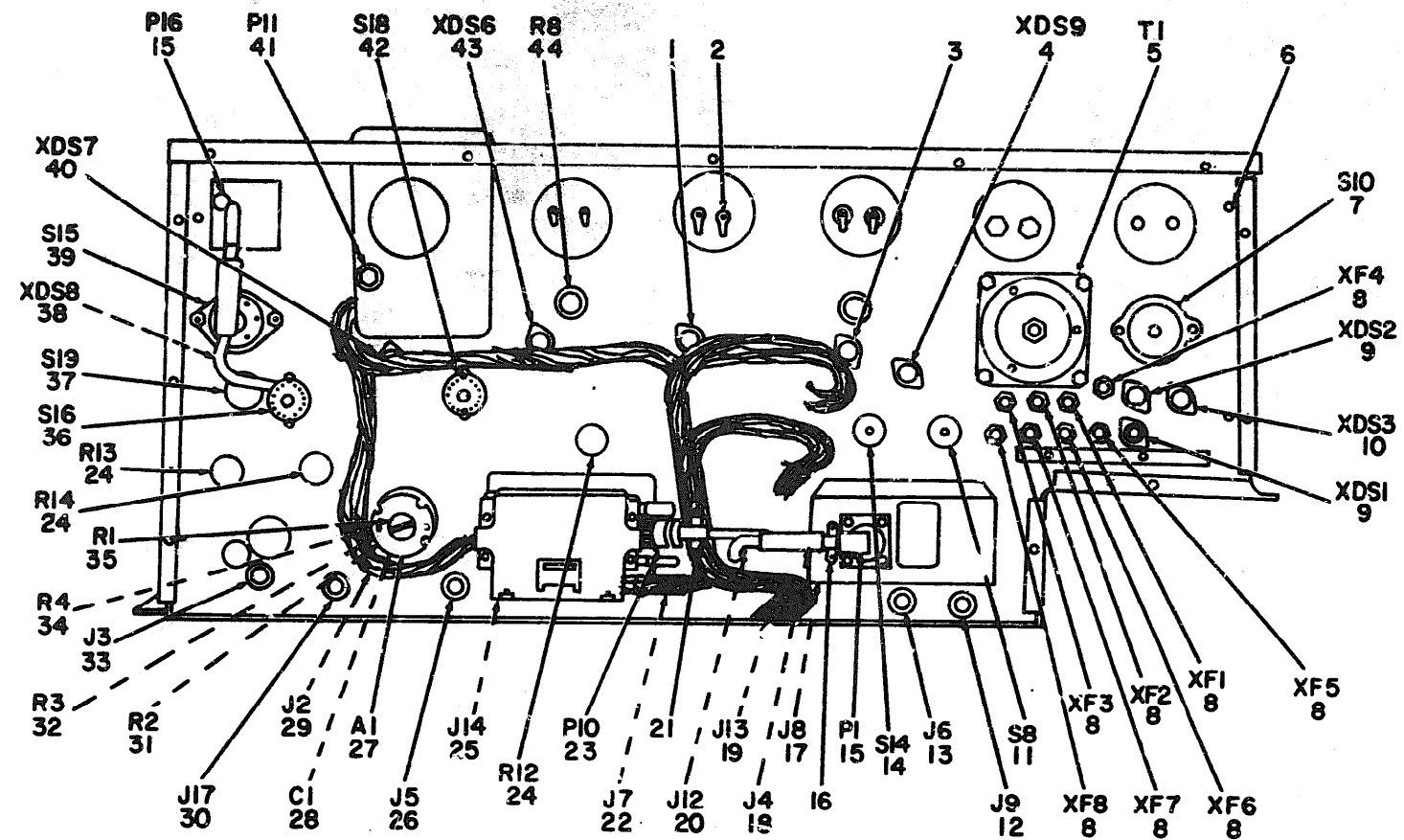


NOTE: FOR COMPLETE REFERENCE DESIGNATION  
PREFIX WITH IAI.

ELOMXX003

Figure 3. Test Set, Compass System AN/ASM-63 (LT-3310B) Panel Assembly, Rear View.

(1) ILLUSTRATION		(2)	(3)	(4)	(5)	(6)	(7)	(8)
(a) FIG NO.	(b) ITEM NO.	SMR CODE	NATIONAL STOCK NUMBER	PART NUMBER	FSCM	DESCRIPTION	USABLE ON CODE	U/A
1	1	PAHZZ	5935-00-501-5488	105-603	74970	JACK, TIP	2CM	EA 1
3	2	PAHZZ	5935-00-702-4199	105-602	74970	JACK, TIP	2CM	EA 1
3	3	PAHZZ	5945-00-809-3798	131793-04	82415	RELAY, ARMATURE	2CM	EA 10
3	4	PAHZZ	5950-00-603-9361	990839-01	35351	DUMMY LOAD, ELECTRICAL	2CM	EA 2
3	5	PAHZZ	5550-00-557-6861	990792-01	35351	TRANSFORMER	2CM	EA 1
3	6	XDHZZ		990840-01	35351	DUMMY LOAD	2CM	EA 1
3	7	XDHZZ		735079-01	35351	TRANSFORMER	2CM	EA 1
3	8	PAHZZ	5950-00-578-1124	990791-01	35351	TRANSFORMER	2CM	EA 1
3	9	PAHZZ	5950-00-578-1051	4-RH-255	97965	REACTOR	2CM	EA 1
3	10	PAHZZ	5950-00-556-1716	990789-01	35351	TRANSFORMER	2CM	EA 1
3	11	XDHZZ		AN515CR4	88044	SCREW, MACHINE	2CM	EA 1
3	12	PAHZZ	5310-00-045-0591	NS35338-22	96906	WASHER, LOCK	2CM	EA 1
3	13	XDHZZ		AN515-GR7	88044	SCREW, MACHINE	2CM	EA 16
3	14	XDHZZ		RV4LAXA500A	81349	RESISTOR, VARIABLE	2CM	EA 1
3	15	XDHZZ		RV4LAXA752A	81349	RESISTOR, VARIABLE	2CM	EA 1



ELOMX004

Figure 4. Test Set, Compass System AN/ASM-63 (LT-3310B) Panel Assembly, Rear View of Front Panel.

## SECTION II

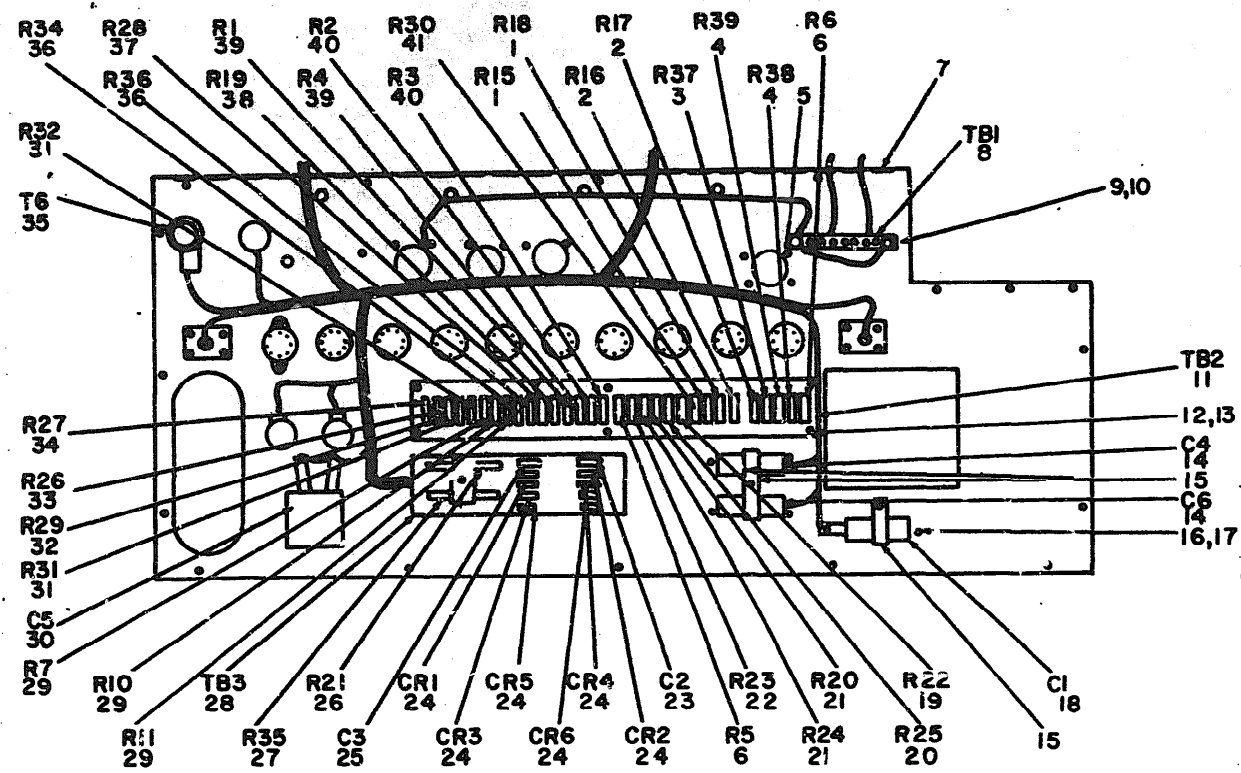
TM11-6625-503-24P

(1) ILLUSTRATION		(2)	(3)	(4)	(5)	(6)	(7)	(8)
(a) FIG NO.	(b) ITEM NO.	SNR CODE	NATIONAL STOCK NUMBER	PART NUMBER	PFCM	DESCRIPTION	USABLE ON CODE	QTY INC IN UNIT
4	1	PAMZZ	6210-00-852-2944	134-5030-352-2	72619	LIGHT, INDICATOR	2Cb	EA 1
4	2	XDMZZ	5940-00-660-3631	NS25036-50	96906	TERMINAL, LUG	2CW	EA 6
4	3	XDMZZ		134-5030-352-1	72619	LIGHT, INDICATOR	2CW	EA 1
4	4	XDMZZ		134-5030-376	72619	LIGHT, INDICATOR	2Cb	EA 1
4	5	PAMZZ	5950-00-557-6988	M263	24655	TRANSFORMER	2CW	EA 1
4	6	PAMZZ	5305-00-174-0719	ANS07-1092R8	88044	SCREW, MACHINE	2CK	EA 4
4	7	XDMZZ		230-1094	71590	SWITCH, ROTARY	2CK	EA 1
4	8	PAMZZ	5920-00-918-7491	340125	75915	FUSEHOLDER	2Cb	EA 8
4	9	PAMZZ	5920-00-010-6652	NS90287-12	96906	LIGHT, INDICATOR	2CW	EA 2
4	10	XDMZZ		NS90287-10	96906	LIGHT, INDICATOR	2CW	EA 1
4	11	XDMZZ		PA024-2178	71590	SWITCH, ROTARY	2Cb	EA 1
4	12	XDMZZ		PT02A-12-19S	77820	CONNECTOR, ELECTRICAL	2CW	EA 1
4	13	XDMZZ		PT02A-12-8SX	77820	CONNECTOR, ELECTRICAL	2CW	EA 1
4	14	XDMZZ		PA024-2272	71590	SWITCH, ROTARY	2CW	EA 1
4	15	PAMZZ	5935-00-195-9100	NS3108-822-14S	96906	CONNECTOR, PLUG	2CW	EA 2
4	16	PAMZZ	5935-00-223-0572	NS3057-12A	96906	CLAMP, ELECTRICAL	2CW	EA 1
4	17	XDMZZ		PT02A-12-8SY	77820	CONNECTOR, ELECTRICAL	2CW	EA 1
4	18	XDMZZ		PT02A-6S	77820	CONNECTOR, ELECTRICAL	2CW	EA 1
4	19	PAMZZ	5935-00-826-1020	PT02A-12-10S	77820	CONNECTOR, ELECTRICAL	2CW	EA 1
4	20	XDMZZ		PT02A-12-10SD	77820	CONNECTOR, ELECTRICAL	2CW	EA 1
4	21	PAMZZ	5935-00-280-2195	NS3057-0A	96906	CLAMP, ELECTRICAL	2CW	EA 1
4	22	XDMZZ		PT02A-10-6SN	77820	CONNECTOR, ELECTRICAL	2CW	EA 1
4	23	PAMZZ	5935-00-665-7657	NS3106A-14S-6S	96906	CONNECTOR, PLUG	2CW	EA 1
4	24	XDMZZ		CM27105-5	12697	RESISTOR, VARIABLE	2CW	EA 3
4	25	XDMZZ		PT02A-12-8S	77820	CONNECTOR, ELECTRICAL	2CW	EA 1
4	26	XDMZZ		PT02A-12-8S2	77820	CONNECTOR, ELECTRICAL	2CW	EA 1
4	27	XDMZZ		997984-01	35351	PHASE REFERENCE ASSEMBLY	2CW	EA 1
4	28	XDMZZ		CP05A1K8104K1	81349	CAPACITOR	2CW	EA 1
4	29	PAMZZ	5935-00-762-1002	PT02A-14-18S	77820	CONNECTOR, ELECTRICAL	2CW	EA 1
4	30	XDMZZ		PT02A-12-10SX	77820	CONNECTOR, ELECTRICAL	2CW	EA 1
4	31	XDMZZ		RM65F5621D	81349	RESISTOR, FIXED, FILM	2CW	EA 1
4	32	PAMZZ	5905-00-764-4003	RM65F5111D	81349	RESISTOR, FIXED, FILM	2CW	EA 1
4	33	PAMZZ	5935-00-827-1545	PT02A-16-26S	77820	CONNECTOR, ELECTRICAL	2CW	EA 1
4	34	XDMZZ		RM65F5211D	81349	RESISTOR, FIXED, FILM	2CW	EA 1
4	35	XDMZZ		RV6LAX5A252A	81349	RESISTOR, VARIABLE	2CW	EA 1
4	36	XDMZZ		PA024-4262	71590	SWITCH, ROTARY	2CW	EA 1
4	37	XDMZZ		PA024-2190	71590	SWITCH, ROTARY	2CW	EA 1
4	38	XDMZZ		134-5030-352-5	72619	LIGHT, INDICATOR	2Cb	EA 1
4	39	XDMZZ		230-1095	71590	SWITCH, ROTARY	2CW	EA 1
4	40	XDMZZ		134-5030-352-4	72619	LIGHT, INDICATOR	2CW	EA 1

SECTION II

TM11-6625-503-24P

(1) ILLUSTRATION:			(2)	(3)	(4) PART NUMBER	(5) FCNM	(6) DESCRIPTION	(7) USABLE ON CODE	(8) U/M	(9) QTY INC IN UNIT
(a) FIG. NO.	(b) ITEM NO.	(c) SMM CODE								
4	41	PAHZZ	5935-00-681-5685	NATIONAL STOCK NUMBER	MS35166-880	96906	CONNECTOR, PLUS	2CM	EA	1
4	42	XDNZZ			PA024-2273	71990	SWITCH, ROTARY	2CM	EA	1
4	43	XDNZZ			134-5030-352-3	72619	LIGHT, INDICATOR	2CM	EA	1
4	44	XDNZZ			RV4NAX50500A	81349	RESISTOR, VARIABLE	2CM	EA	1



NOTE: FOR COMPLETE REFERENCE DESIGNATION  
PREFIX WITH IAI.

ELOMXX05

Figure 5. Test Set, Compass System AN/ASM-63 (LT-3310B) Panel Assembly, Inside Back Cover View.

SECTION II

TM11-6625-503-24P

(1) ILLUSTRATION		(2)	(3)	(4)	(5)	(6)	(7)	(8)
(a) FIG NO.	(b) ITEM NO.	SAM CODE	NATIONAL STOCK NUMBER	PART NUMBER	FSCM	DESCRIPTION	USABLE ON CODE	U/M
5	1	XDHZZ		RN7084220F	81349	RESISTOR, FIXED, FILM	2CM	EA 2
5	2	PAMZZ	5905-00-578-4509	RN7081900F	81349	RESISTOR, FIXED, FILM	2CM	EA 2
5	3	PAMZZ	5905-00-646-5706	RN7082005F	81349	RESISTOR, FIXED, FILM	2CM	EA 1
5	4	PAMZZ	5905-00-577-0890	RN7084991F	81349	RESISTOR, FIXED, FILM	2CM	EA 2
5	5	PAMZZ	5310-00-081-6087	MS20365-632	06906	NUT, SELF-LOCKING	2CM	EA 66
5	6	XDHZZ		RN70864R9F	81349	RESISTOR, FIXED, FILM	2CM	EA 2
5	7	XDHZZ		735148-01	35351	HINGE, BUTT	2CM	EA 1
5	8	XDHZZ		993472-11	35351	TERMINAL BOARD	2CM	EA 1
5	9	XDHZZ		AN515-6R12	88044	SCREW, MACHINE	2CM	EA 2
5	10	XDHZZ		990302-18	35351	SPACER, SLEEVE	2CM	EA 2
5	11	XDHZZ		735088-01	35351	TERMINAL BOARD	2CM	EA 1
5	12	XDHZZ		AN515-6R16	88044	SCREW, MACHINE	2CM	EA 10
5	13	XDHZZ		990302-13	35351	SPACER, SLEEVE	2CM	EA 10
5	14	XDHZZ		515415-01	35351	CAPACITOR, FIXED	2CM	EA 2
5	15	XDHZZ	5340-00-290-7273	3/4-6	99987	CLAMP, LOOP	2CM	EA 3
5	16	PAMZZ	5940-00-583-0512	1423	88245	TERMINAL STUD	2CM	EA 6
5	17	XDHZZ		AN515-6R3	88044	SCREW, MACHINE	2CM	EA 6
5	18	XDHZZ		CPA5A1EE47K	81349	CAPACITOR, FIXED	2CM	EA 1
5	19	XDHZZ		RN7081960F	81349	RESISTOR, FIXED, FILM	2CM	EA 1
5	20	PAMZZ	5905-00-205-9027	RN7081131F	81349	RESISTOR, FIXED, FILM	2CM	EA 1
5	21	XDHZZ		RN7081400F	81349	RESISTOR, FIXED, FILM	2CM	EA 2
5	22	PAMZZ	5905-00-581-4980	RN7081741F	81349	RESISTOR, FIXED, FILM	2CM	EA 1
5	23	PAMZZ	5910-00-165-2785	MILC39006-9	31349	CAPACITOR, FIXED	2CM	EA 1
5	24	XDHZZ		B2130-19	35352	SEMICONDUCTOR DEVICE, DIODE	2CM	EA 6
5	25	XDHZZ		PP25850A1	21520	CAPACITOR, FIXED	2CM	EA 1
5	26	PAMZZ	5905-00-556-6418	RN8081501F	81349	RESISTOR, FIXED, FILM	2CM	EA 1
5	27	PAMZZ	5905-00-686-3007	RN8081211F	81349	RESISTOR, FIXED, FILM	2CM	EA 1
5	28	XDHZZ		735090-01	35351	TERMINAL BOARD	2CM	EA 1
5	29	XDHZZ		RS2A150R0F	91637	RESISTOR, FIXED, WIRE WOUND	2CM	EA 3
5	30	PAMZZ	5910-00-171-2952	CP53B1EB40K	81349	CAPACITOR, FIXED, PAPER	2CM	EA 1
5	31	XDHZZ		RS2A50000F	91637	RESISTOR, FIXED	2CM	EA 2
5	32	XDHZZ		RS2A650R0F	91637	RESISTOR, FIXED	2CM	EA 1
5	33	XDHZZ		RS2A97R00F	91637	RESISTOR, FIXED	2CM	EA 1
5	34	XDHZZ		RS2A9R000F	91637	RESISTOR, FIXED	2CM	EA 1
5	35	XDHZZ		TTX9	04879	TRANSFORMER	2CM	EA 1
5	36	XDHZZ		RS2A820R0F	91637	RESISTOR, FIXED, WIRE WOUND	2CM	EA 2
5	37	XDHZZ		RS3806R0F	91637	RESISTOR, FIXED, WIRE WOUND	2CM	EA 1
5	38	PAMZZ	5905-00-195-6824	RC426F751J	81349	RESISTOR, FIXED, COMPOSITION	2CM	EA 1
5	39	PAMZZ	5905-00-279-3527	RC428F470J	81349	RESISTOR, FIXED, COMPOSITION	2CM	EA 2
5	40	XDHZZ		RC428F512V	81349	RESISTOR, FIXED, COMPOSITION	2CM	EA 2

SECTION II

TM11-6625-502-24P

(1) ILLUSTRATION		(2) SMA CODE	(3) NATIONAL STOCK NUMBER	(4) PART NUMBER	(5) PQCN	(6) DESCRIPTION	(7) USABLE ON CODE	(8) QTY INC IN UNIT
(a) FIG NO.	(b) ITEM NO.						U/M	
5	41	PAHZZ	5905-00-581-1023	RN708196ZF	81349	RESISTOR, FIXED, FILM	2CH	EA

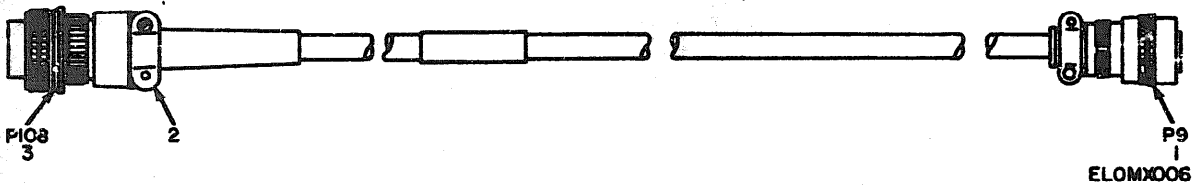


Figure 6. Cable Assembly, Special Purpose, Electrical, CX-7516/ASM-63 998940-01-01 (W3).

(1) ILLUSTRATION		(2)	(3) NATIONAL STOCK NUMBER	(4) PART NUMBER	(5) FSC#	(6) DESCRIPTION	(7) USABLE ON CODE	(8) QTY INC IN UNIT
(a) FIG NO.	(b) ITEM NO.	SMR CODE						
6	1	PA0ZZ	5955-00-845-6764	PT06A-14-19P	77820	CONNECTOR, PLUG	2CW	EA 1
6	2	PA0ZZ	5935-00-223-0572	MS3057-12A	96906	CLAMP, ELECTRICAL	2CW	EA 3
6	3	PA0ZZ	5935-00-283-3837	MS3106A-22-14P	96906	CONNECTOR, PLUG	2CW	EA 1
						GROUP 01 CABLE ASSEMBLY, SPECIAL PURPOSE, ELECTRICAL, CX-7516/ASM-63 998940-01-01 (W3)		



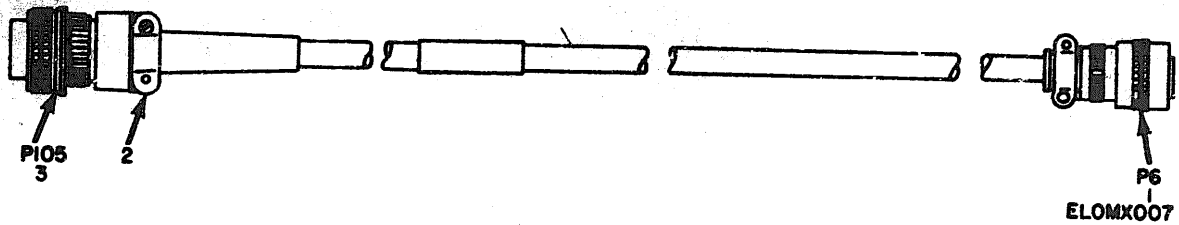


Figure 7. Cable Assembly, Special Purpose, Electrical CX-7569/ASM-63 998946-01-1 (W4).

(1) ILLUSTRATION		(2)	(3)	(4)	(5)	(6)	(7)	(8)
(a) FIG NO.	(b) ITEM NO.	SMR CODE	NATIONAL STOCK NUMBER	PART NUMBER	FSCM	DESCRIPTION	USABLE ON CODE	QTY INC IN UNIT
7	1	XD0ZZ	5935-00-688-4026	PT06A-12-8PX	77820	CONNECTOR, PLUG	2CH	EA 1
7	2	PA0ZZ		RS3057-8A	96906	CLAMP, ELECTRICAL	2CH	EA 1
7	3	XD0ZZ		RS3106A-165-1P	96906	CONNECTOR, PLUG	2CH	EA 1
						GROUP 02 CABLE ASSEMBLY, SPECIAL PURPOSE, CX-7569/ASM-63 998946-01-01 (W4)		

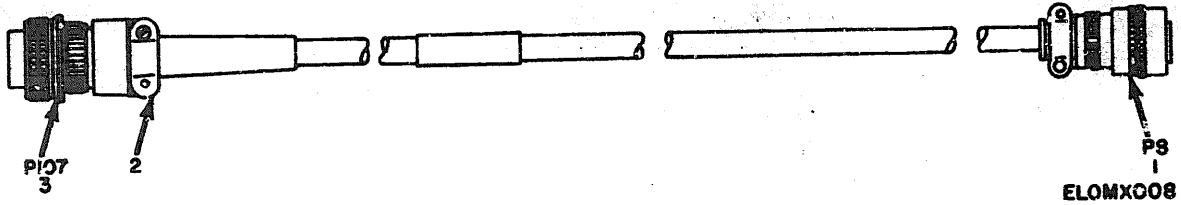


Figure 8. Cable Assembly, Special Purpose, Electrical, CX-7567/ASM-63 998941-01-01 (W5)

(1) ILLUSTRATION		(2)
(a) FIG NO.	(b) ITEM NO.	SMR CODE
8	1	XDOZZ
8	2	PAOZZ
8	3	XDOZZ

(3)  
NATIONAL STOCK NUMBER

5935-00-688-4026

(4) PART NUMBER	(5) FSCM	(6) DESCRIPTION	(7) USABLE ON CODE	(8) U/A	(9) QTY INC IN UNIT
GROUP 03 CABLE ASSEMBLY, SPECIAL PURPOSE, ELECTRICAL, CX-7567/ASM-63 998941-01-01 (W5)					
PT06A-12-8PY	77820	CONNECTOR, PLUG	2CW	EA	1
HSJ057-8A	96906	CLAMP, ELECTRICAL	2CW	EA	1
HS35106A-16S-1S	96906	CONNECTOR, PLUG	2CW	EA	1

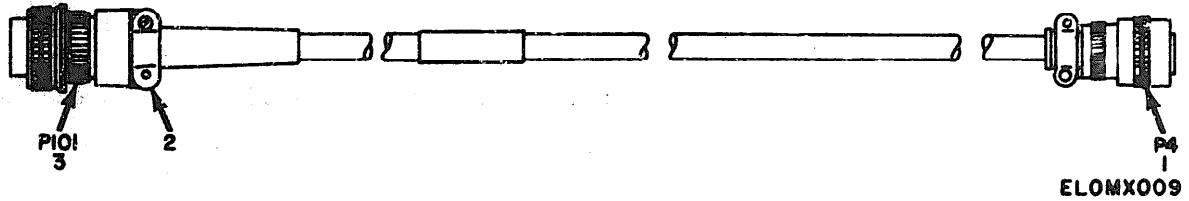


Figure 9. Cable Assembly, Special Purpose, Electrical, CX-7591/ASM-63 998962-01-01 (W6).

(1) ILLUSTRATION		(2)	(3)	(4)	(5)	(6)	(7)	(8)
(a) FIG NO.	(b) ITEM NO.	SMR CODE	NATIONAL STOCK NUMBER	PART NUMBER	FSCM	DESCRIPTION  USABLE ON CODE	U/M	QTY INC IN UNIT
9	1	PAQZZ	5935-00-818-3426	PT06A-10-6P	77820	GROUP 04 CABLE ASSEMBLY, SPECIAL PURPOSE, ELECTRICAL, CX-7591/ASH-63 998962-01-01 (W6)		
9	2	PAQZ*	5935-00-280-2195	MS3057-6A	96906	CONNECTOR, PLUG  2CW	EA	1
9	3	PAQZZ	5935-00-201-7983	MS3106A-14S-5P	96906	CLAMP, ELECTRICAL  2CW	EA	1
						CONNECTOR, PLUG  2CW	EA	1

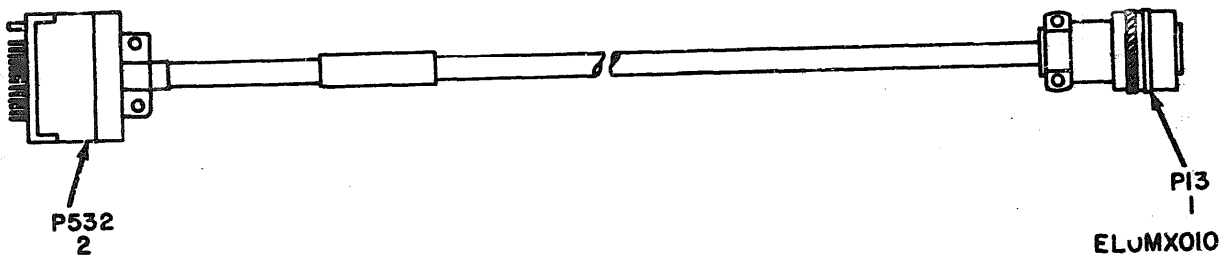


Figure 10. Cable Assembly, Special Purpose, Electrical, CX-7564/ASM-63 998936-01-01 (W7).

(1) ILLUSTRATION		(2)	(3)	(4)	(5)	(6) DESCRIPTION	(7)	(8)
(a) FIG NO.	(b) ITEM NO.	SMR CODE	NATIONAL STOCK NUMBER	PART NUMBER	FSCM	USABLE ON CODE	U/M	QTY INC IN UNIT
10	1	PAOZZ	5935-00-729-8587	PT06A-12-10P	77820	CONNECTOR, PLUG	2CM	EA 1
10	2	XDOZZ		HRE20P-7	81312	CONNECTOR, ELECTRICAL	2CM	EA 1
						GROUP 05 CABLE ASSEMBLY, SPECIAL PURPOSE, ELECTRICAL, CX-7564/ASM-63 998936-01-01 (W7)		

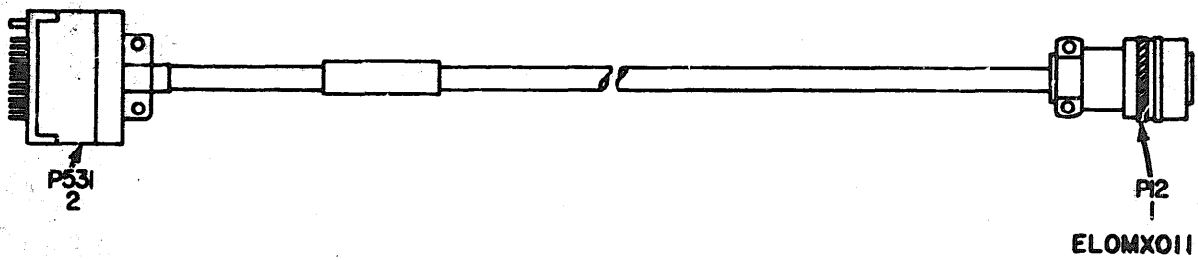


Figure 11. Cable Assembly, Special Purpose, Electrical CX-7565/ASM-63 998937-01. 01 (W8).

(1) ILLUSTRATION		(2) SMR CODE	(3) NATIONAL STOCK NUMBER	(4) PART NUMBER	(5) FSCM	(6) DESCRIPTION	(7) USABLE ON CODE	(8) QTY INC IN UNIT
(a) FIG NO.	(b) ITEM NO.						U/A	
11	1	X00ZZ		PT06A-12-10PW	77820	CONNECTOR, PLUG	2CW	EA 1
11	2	X00ZZ		HRE14P-7	81312	CONNECTOR, ELECTRICAL	2CW	EA 1

GROUP 06 CABLE ASSEMBLY, SPECIAL PURPOSE,  
ELECTRICAL, CX-7565/ASM-63  
998937-01-01 (W8)

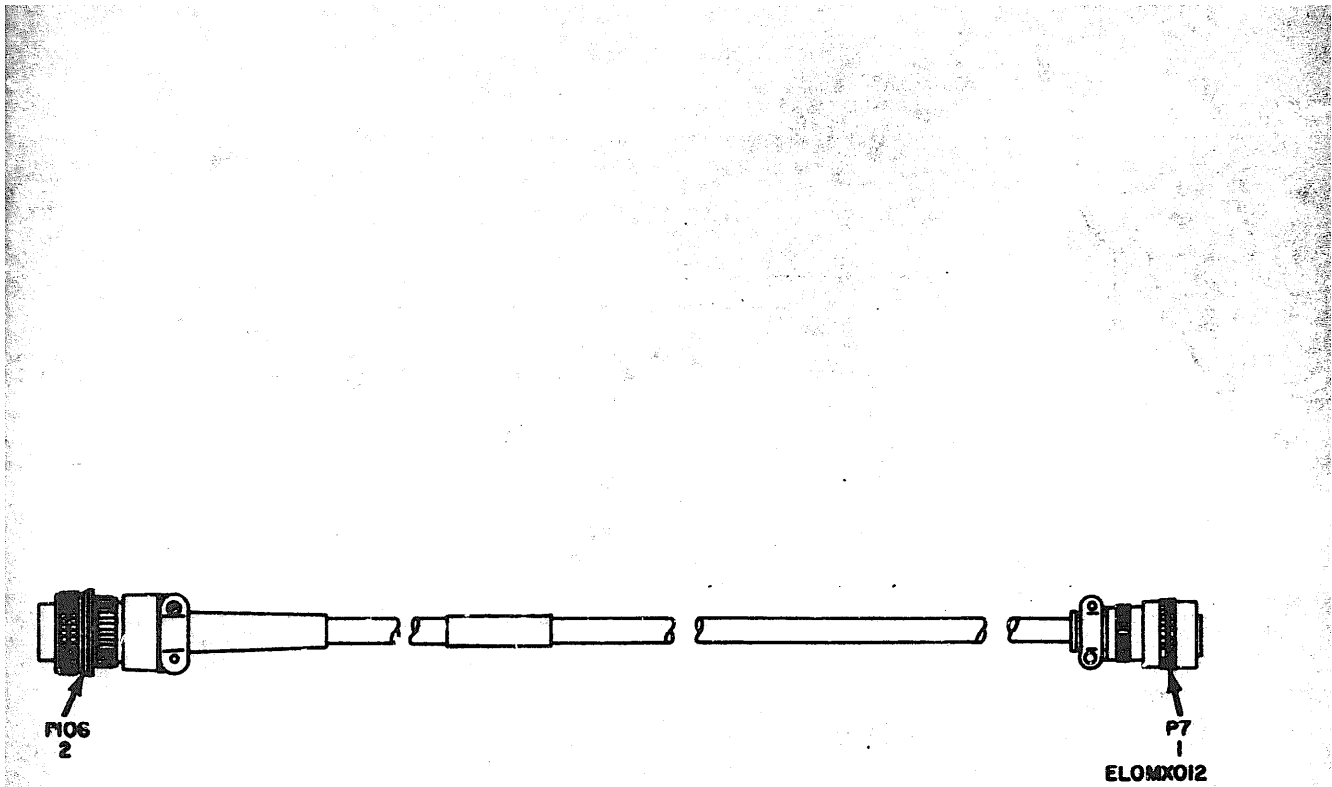


Figure 12. Cable Assembly, Special Purpose, Electrical, CX-7568/ASM-63 998942-01-01 (W9).

(1) ILLUSTRATION		(2)	(3)	(4) PART NUMBER	(5) FSCM	(6) DESCRIPTION	(7) USABLE CM CODE	(8) U/M	(9) QTY INC IN UNIT
(a) FIG NO.	(b) ITEM NO.	SMR CODE							
12	1	PA0ZZ	5935-00-871-3404	PT06A-10-6PW	77820	CONNECTOR, PLUG	2CM	EA	1
12	2	XD0ZZ		M3106A-14S-6P	96906	CONNECTOR, ELECTRICAL	2CM	EA	1
				GROUP 07 CABLE ASSEMBLY, SPECIAL PURPOSE, ELECTRICAL, CX-7568/ASM-63 998942-01-01 (W9)					

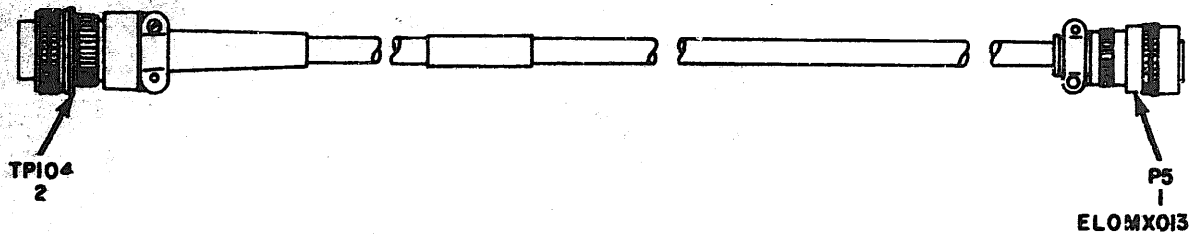


Figure 13. Cable Assembly, Special Purpose, Electrical, CX-657C/ASM-63 998961-01-01 (W10).

(1) ILLUSTRATION		(2)	(3)	(4)	(5)	(6)	(7)	(8)
(a) FIG NO.	(b) ITEM NO.	SMR CODE	NATIONAL STOCK NUMBER	PART NUMBER	FSCM	DESCRIPTION	USABLE ON CODE	QTY INC IN UNIT
						GROUP 08 CABLE ASSEMBLY, SPECIAL PURPOSE, ELECTRICAL, CX-6570/ASM-63 998961-01-01 (W10)		
13	1	PA0ZZ	5935-00-878-8194	PT06A-12-8PW	77820	CONNECTOR, PLUG	2CW	EA 1
13	2	XD0ZZ		C7-20P-VC/C386C	11707	CONNECTOR, CABLE	2CW	EA 1

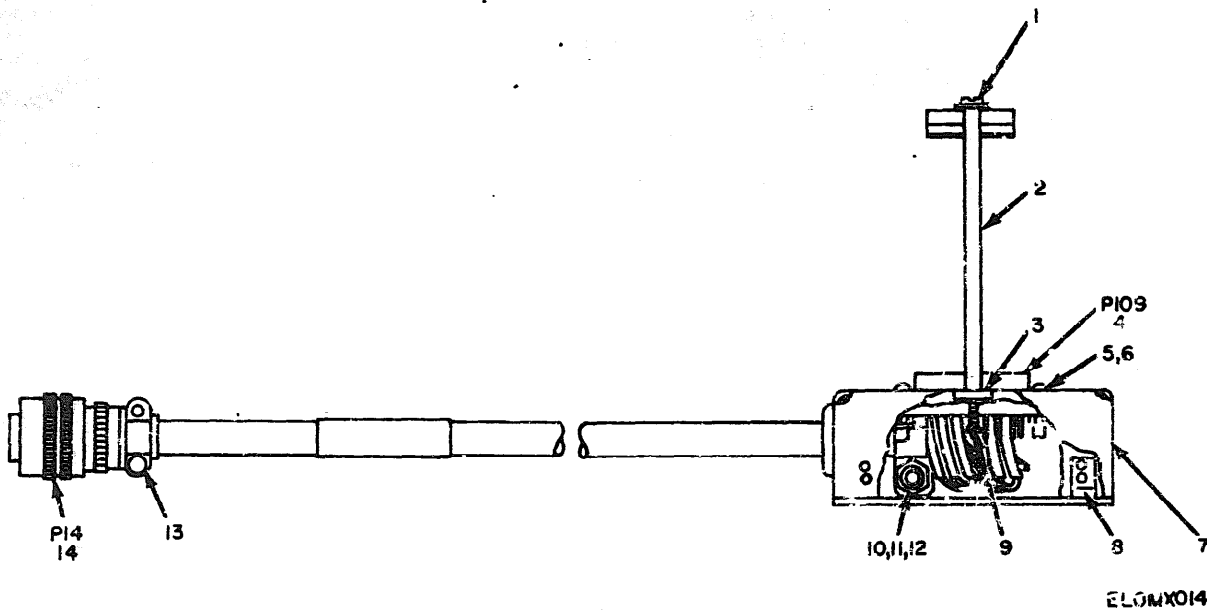


Figure 14. Cable Assembly, Special Purpose, Electrical, CX-7572/ASM-63  
998964-01-01 (W11).

(1) ILLUSTRATION		(2)	(3)	(4)	(5)	(6) DESCRIPTION	(7) USABLE CM CODE	(8) QTY INC IN UNIT
(a) FIG NO	(b) ITEM NO	SMR CODE	NATIONAL STOCK NUMBER	PART NUMBER	FSCM		U/M	
GROUP 09 CABLE ASSEMBLY, SPECIAL PURPOSE, ELECTRICAL, CX-7572/ASM-63 998964-01-01 (W11)								
14	1	PAOZZ	5306-00-856-6921	110006-01	35351	SCREW, SPECIAL	2CM EA	1
14	2	XDOZZ		110008-01	35351	SPACER, SLEEVE	2CM EA	1
14	3	XDOZZ		LHTA51M2860-40	72962	NUT, PLATE	2CM EA	1
14	4	PAOZZ	5935-00-591-5591	KM14SP	81312	CONNECTOR	2CM EA	1
14	5	PAOZZ	5310-00-088-0551	NS20965-440	96906	NUT, SELF-LOCKING	2CM EA	2
14	6	XDOZZ		ANS15-4R10	88044	SCREW, MACHINE	2CM EA	2
14	7	XDOZZ		735152-01	35351	JUNCTION, BOX	2CM EA	1
14	8	XDOZZ		22A27M-22-40	72962	NUT, PLATE	2CM EA	1
14	9	PAOZZ	5365-00-619-7229	NS16633-1006	96906	RING, RETAINING	2CM EA	1
14	10	PAOZZ	5310-00-266-4461	NS20965-032	96906	NUT, SELF-LOCKING	2CM EA	1
14	11	XDOZZ		ANS26-032R10	88044	SCREW, MACHINE	2CM EA	1
14	12	XDOZZ		NS15795-207	96906	WASHER, FLAT	2CM EA	1
14	13	XDOZZ		5/16-6	95987	CLAMP, LOOP	2CM EA	1
14	14	XDOZZ		PT06A-12-3P	77820	CONNECTOR, PLUG	2CM EA	1



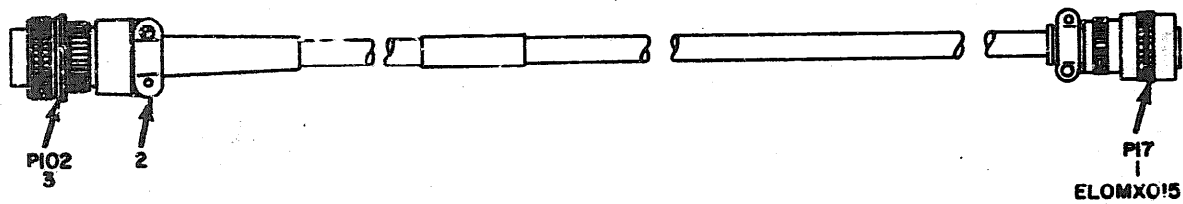
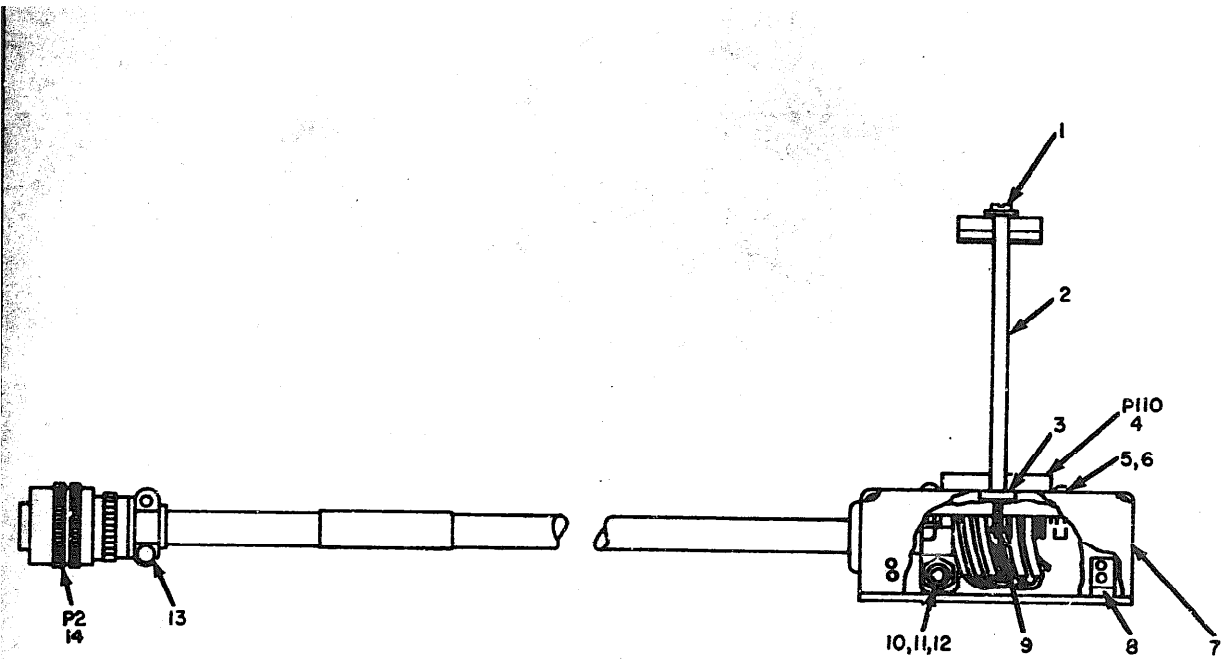


Figure 15. Cable Assembly, Special Purpose, Electrical, CX-7562/ASM-63 998930-01-01 (W12).

(1) ILLUSTRATION		(2) SMR CODE	(3) NATIONAL STOCK NUMBER	(4) PART NUMBER	(5) FSCM	(6) DESCRIPTION	USABLE ON CODE	(7) U/M	(8) QTY INC IN UNIT
(a) FIG NO.	(b) ITEM NO.								
15	1	XDOZZ		PT06A-12-10PX	77820	CONNECTOR, PLUG	2CW	EA	1
15	2	PAOZZ	5935-00-809-0786	MS3057-10A	96906	CLAMP, ELECTRICAL	2CW	EA	1
15	3	PAOZZ	5935-00-721-0491	MS3106A-18-15	96906	CONNECTOR, PLUG	2CW	EA	1
						GROUP 10 CABLE ASSEMBLY, SPECIAL PURPOSE, ELECTRICAL, CX-7562/ASM-63 998930-01-01 (W12)			



ELOMx016

Figure 16. Cable Assembly, Special Purpose, Electrical, CX-7563/ASM-63 998935-01-01 (W14).

(1) ILLUSTRATION		(2) SMR CODE	(3) NATIONAL STOCK NUMBER	(4) PART NUMBER	(5) FSCN	(6) DESCRIPTION	(7) USABLE ON CODE	(8) U/M	(9) QTY INC IN UNIT
(a) FIG NO.	(b) ITEM NO.								
GROUP 11 CABLE ASSEMBLY, SPECIAL PURPOSE, ELECTRICAL, CX-7563/ASH-63 998935-01-01 (W14)									
16	1	PA0ZZ	5306-00-856-0921	110006-01	35351	SCREW, SPECIAL	2CW	EA	1
16	2	XD0ZZ		110008-01	35351	SPACER, SLEEVE	2CW	EA	1
16	3	XD0ZZ		LHTA51N2860-40	72962	NUT, PLATE	2CW	EA	1
16	4	PA0ZZ	5935-00-501-5594	KW145J	81312	CONNECTOR, ELECTRICAL	2CW	EA	1
16	5	PA0ZZ	5310-00-088-0551	MS20365-440	96906	NUT, SELF-LOCKING	2CW	EA	2
16	6	XD0ZZ		ANS15-4R10	88044	SCREW, MACHINE	2CW	EA	2
16	7	XD0ZZ		735152-01	35351	JUNCTION, BOX	2CW	EA	1
16	8	XD0ZZ		22A27H-22-40	72962	NUT, PLATE	2CW	EA	4
16	9	PA0ZZ	5365-00-619-7229	MS16633-1006	96906	RING, RETAINING	2CW	EA	1
16	10	PA0ZZ	5310-00-266-4461	MS20365-832	96906	NUT, SELF-LOCKING	2CW	EA	1
16	11	XD0ZZ		ANS26-832R10	88044	SCREW, MACHINE	2CW	EA	1
16	12	XD0ZZ		MS15795-207	96906	WASHER, FLAT	2CW	EA	1
16	13	XD0ZZ		5/16-6	95987	CLAMP, LCOP	2CW	EA	1
16	14	PA0ZZ	5935-00-865-9599	PT86A-14-18P	77820	CONNECTOR, PLUG	2CW	EA	1

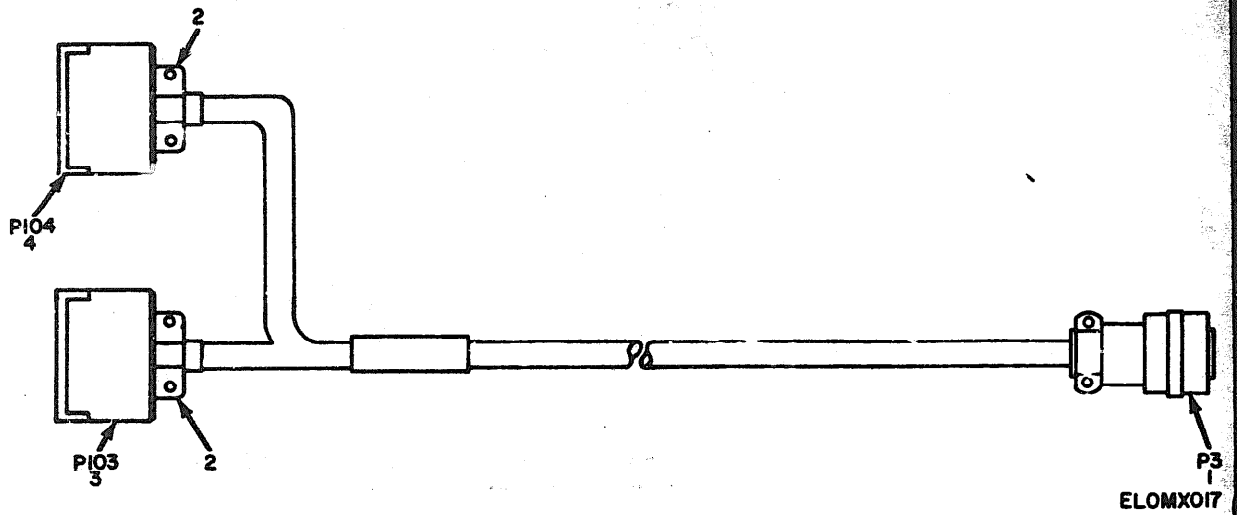


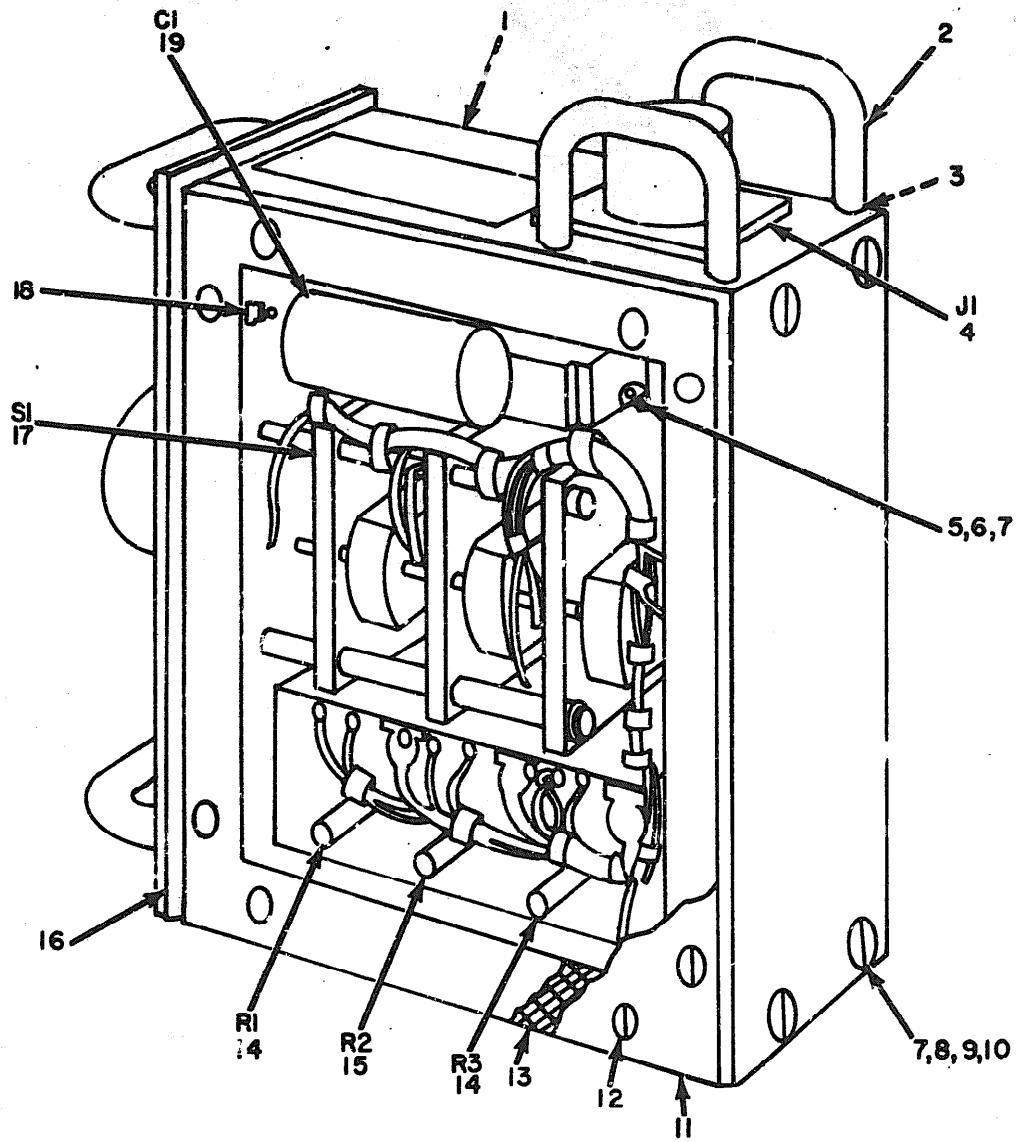
Figure 17. Cable Assembly, Special Purpose, Electrical, CX-7573/ASM-63  
998968-01-01 (W15).

(1) ILLUSTRATION		(2)
(a) FIG NO.	(b) ITEM NO.	SMR CODE
17	1	PA0ZZ
17	2	XDOZZ
17	3	PA0ZZ
17	4	XDOZZ

(3)  
NATIONAL  
STOCK  
NUMBER

5905-00-850-6879  
5935-00-557-9615

(4) PART NUMBER	(5) FSCM	(6) DESCRIPTION	USABLE ON CODE	(7) U/M	(8) QTY IN UNIT
		GROUP 12 CABLE ASSEMBLY, SPECIAL PURPOSE, ELECTRICAL, CX-7573/ASM-63 998968-01-01(W15)			
PT06A-16-26P	77820	CONNECTOR, PLUG	2CW	EA	1
5/16-6	95987	CLAMP, LOOP	2CW	EA	2
W114SN	81312	CONNECTOR, ELECTRICAL	2CW	EA	1
W114SN	81312	CONNECTOR, ELECTRICAL	2CW	EA	1



**NOTE: FOR COMPLETE REFERENCE DESIGNATION  
PREFIX WITH IAIA8**

**ELCMX018**

Figure 18. Simulator, Compass Transmitter, SM-272/ASN, Top View.

SECTION II

TM11-6625-503-24P

(1) REGISTRATION			(3) NATIONAL STOCK NUMBER	(4) PART NUMBER	(5) PQCM	(6) DESCRIPTION	(7) UOM	(8) QTY INC IN UNIT
(a) FPO NO.	(b) FTDA NO.	(c) ORR CODE						
USABLE ON CODE								
GROUP 16 SIMULATOR, COMPASS TRANSMITTER SM-272/ASN (LT-3316)								
18	1	XDMZZ		992131-01	35351	CHASSIS ASSEMBLY	405 EA	1
18	2	XDMZZ		990697-01	35351	GUARD	405 EA	2
18	3	XDMZZ		05413-06-08	35351	SCREW, MACHINE	405 EA	4
18	4	XDMZZ		AN8102C-14S-6P	88044	CONNECTOR, ELECTRICAL	405 EA	1
18	5	PAMZZ	5940-00-204-0966	31802	00779	LUG, SOLDERLESS	405 EA	1
18	6	PAMZZ	5310-00-176-6133	AN840-6	88044	NUT, HEXAGON	405 EA	1
18	7	PAMZZ	5310-00-274-8882	AN936-A6	88044	WASHER, LOCK	405 EA	5
18	8	XDMZZ		05413-06-04	35351	SCREW, MACHINE	405 EA	4
18	9	XDMZZ		736262-01	35351	SPACER	405 EA	4
18	10	PAMZZ	5310-00-638-9857	AN960-C6L	88044	WASHER, FLAT	405 EA	4
18	11	XDMZZ		992132-01	35351	PLATE, COVER	405 EA	2
18	12	XDMZZ		AN503-4-3	88044	SCREW, MACHINE	405 EA	16
18	13	XDMZZ		992137-01	35351	GASKET, COVER	405 EA	2
18	14	PAMZZ	5905-00-666-1805	303002-10	12697	RESISTOR, VARIABLE	405 EA	2
18	15	PAMZZ	5905-00-683-1398	508002-1/7	12697	RESISTOR, VARIABLE	405 EA	1
18	16	XDMZZ		99213-01	35351	PANEL	405 EA	1
18	17	XDMZZ		6121	19909	SWITCH, RECTARY	405 EA	1
18	18	XDMZZ		14100	88245	TERMINAL, STUD	405 EA	1
18	19	XDMZZ		CPOSALKB684K	81349	CAPACITOR, FIXED, PAPER	405 EA	1

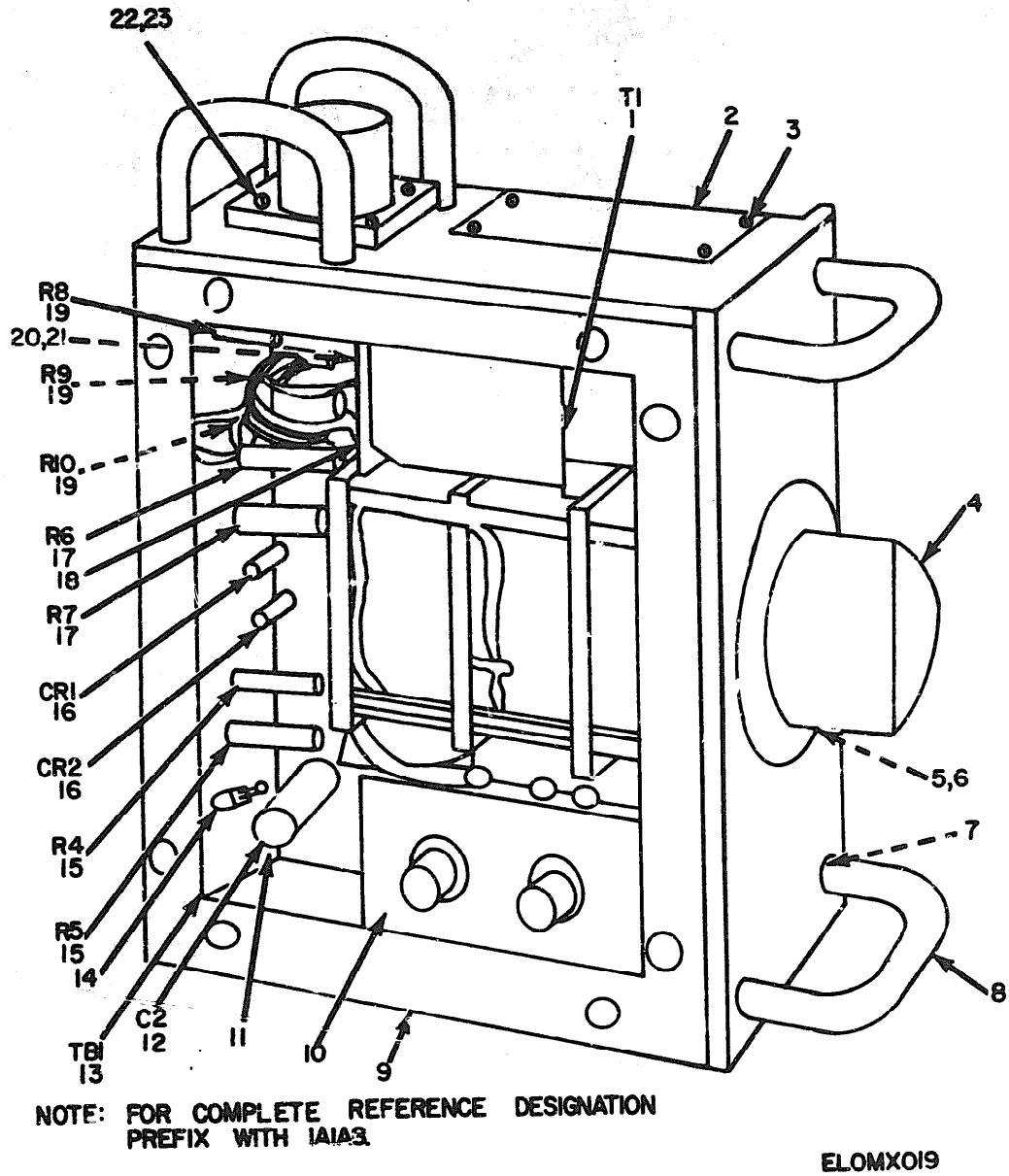


Figure 19. Simulator, Compass Transmitter, SM272/AN, Bottom View.

SECTION II

TM11-6625-503-24P

(1) ILLUSTRATION		(3) NATIONAL STOCK NUMBER	(4) PART NUMBER	(5) PSCN	(6) DESCRIPTION	(7) USABLE ON CODE	(8) U/M	(9) QTY IN UNIT
(a) FIG NO.	(b) ITEM NO.							
19	1	XDHZZ	990	35351	TRANSFORMER	405	EA	1
19	2	XDHZZ	113385-01	35351	PLATE, IDENTIFICATION	405	EA	1
19	3	XDHZZ	AN335-00-2	88044	SCREW, DRIVE	405	EA	4
19	4	PAQZZ	5355-00-579-1210 125-3-26	94144	KNOB	405	EA	1
19	5	PAHZZ	5330-00-599-2619 A46227-5	88044	PACKING, O RING	405	EA	1
19	6	XDHZZ	992138-01	35351	GASKET	405	EA	1
19	7	XDHZZ	Q5413-06-08	35351	SCREW, MACHINE	405	EA	4
19	8	XDHZZ	990911-01	35351	GUARD	405	EA	2
19	9	XDHZZ	992133-01	35351	CRASSIS	405	EA	1
19	10	XDHZZ	992135-01	35351	BRACKET	405	EA	1
19	11	XDHZZ	990694-02	35351	TERMINAL BOARD	405	EA	1
19	12	PAHZZ	5910-00-666-6979 CP05A1KE473K	81349	CAPACITOR, FIXED, PAPER	405	EA	1
19	13	XDHZZ	992140-01	35351	TERMINAL BOARD	405	EA	1
19	14	PAHZZ	5940-00-159-0229 1300C	88245	TERMINAL, STUD	405	EA	1
19	15	PAHZZ	5905-00-280-1582 RM20X1001F	81349	RESISTOR, FIXED, FILM	405	EA	2
19	16	XDHZZ	1N458	81349	SEMICONDUCTOR DEVICE, DIODE	405	EA	2
19	17	XDHZZ	RS2A2R000C	91637	RESISTOR, FIXED	405	EA	2
19	18	XDHZZ	992134-01	35351	BRACKET	405	EA	1
19	19	XDHZZ	RM20X200F	81349	RESISTOR, FIXED, FILM	405	EA	3
19	20	PAHZZ	5310-00-934-9739 AN340-4	88044	NUT, HEXAGON	405	EA	1
19	21	PAHZZ	5310-00-193-7577 AN936-A4	88044	WASHER, LOCK	405	EA	1
19	22	PAHZZ	5310-00-088-0551 AN365-440	88044	NUT, SELF-LOCKING	405	EA	4
19	23	XDHZZ	Q5413-04-05	35351	SCREW, MACHINE	405	EA	4

SECTION IV

NATIONAL STOCK NUMBER AND PART NUMBER INDEX  
 NOTE: LATEST NATIONAL STOCK NUMBER ASSIGNMENTS ARE INCLUDED AT END OF INDEX

TM11-6625-503-24P

STOCK NUMBER	FIGURE NO.	ITEM NO.	STOCK NUMBER	FIGURE NO.	ITEM NO.
5920-00-010-6652	4	9	5935-00-557-9615	17	3
5920-00-050-4953	2	31	6625-00-561-7476	1	3
5310-00-081-8087	2	9	5905-00-577-0890	5	4
5310-00-081-8087	5	5	5950-00-578-1051	3	9
5310-00-088-0551	19	22	5950-00-578-1124	3	8
5615-00-098-5309	1	17	5930-00-578-2325	2	14
6240-00-155-7836	2	13	5905-00-578-1509	5	2
6240-00-155-8714	2	34	5355-00-279-4210	19	4
5940-00-159-0229	19	14	5905-00-581-1023	5	41
5355-00-160-6056	2	12	5905-00-581-4988	5	22
5355-00-160-6893	2	9	6625-00-602-3673	2	4
5910-00-171-2952	5	30	5950-00-603-9361	3	9
5305-00-174-0719	4	6	6605-00-604-5662	1	16
5310-00-176-8133	18	6	5365-00-619-7229	14	9
5310-00-193-7577	19	21	5365-00-619-7229	16	9
5905-00-195-6824	5	38	5310-00-638-9857	18	10
5935-00-195-9100	4	15	5905-00-646-5706	5	9
5935-00-201-7983	9	3	5940-00-660-3631	4	2
5940-00-204-8966	18	9	5935-00-663-7657	4	23
5935-00-223-0572	4	16	5905-00-666-1885	18	14
5935-00-223-0572	6	2	5910-00-666-6979	19	12
5310-00-266-4461	14	10	5935-00-681-5685	4	41
5310-00-266-4461	16	10	5905-00-683-1398	18	19
5940-00-269-2219	2	16	5905-00-686-3007	5	27
5930-00-276-9282	2	35	5935-00-683-4026	7	2
5905-00-280-1582	19	15	5935-00-688-4026	8	2
5935-00-280-2195	4	21	5935-00-702-4199	3	2
5935-00-280-2195	9	2	5935-00-729-8687	10	1
5920-00-280-8342	2	32	5935-00-809-0786	15	2
5920-00-280-8344	2	33	5945-00-809-3798	3	3
5325-00-282-8131	2	21	5340-00-813-6901	2	11
5935-00-283-3837	6	3	5935-00-818-3426	9	1
5340-00-290-7273	5	15	6625-00-825-6113	2	36
6605-00-323-7649	1	16	5930-00-826-0174	2	30
6605-00-323-7662	1	18	5935-00-826-1020	4	19
5940-00-356-2493	2	15	5905-00-850-6879	17	1
5935-00-501-5488	3	1	6210-00-852-2944	4	1
5935-00-501-5591	4	4	5306-00-856-0921	14	1
5935-00-501-5594	16	4	5306-00-856-0921	16	1
5826-00-505-3094	2	8	5935-00-865-9599	16	14
5930-00-519-3270	2	26	5935-00-871-3404	12	1
5950-00-556-1716	3	10	5935-00-378-8194	13	1
5905-00-556-6418	5	26	5920-00-918-7491	4	8
5950-00-557-6861	3	5			

PART NUMBER	FSC:	FIG. NO.	ITEM NO.	PART NUMBER	FSC:	FIG. NO.	ITEM NO.
AN3102C-14S-6P	88044	18	4	DF30BC	58474	2	16
AN340-4	88044	19	20	DF30BC	58474	2	15
AN340-6	88044	18	6	KCC6116A	01771	1	1
AN365-440	88044	19	22	KM14SJ	81312	16	4
AN505-4-5	88044	18	12	KM14SM	81312	17	3
AN507-1032R8	88044	4		KM14SN	81312	17	4
AN515-4R10	88044	14	6	KM14SP	81312	14	4
AN515-4R10	88044	16	6	LHTA51H286C-40	72962	14	3
AN515-6R12	88044	5	9	LHTA51H286C-40	72962	16	9
AN515-6R16	88044	5	12	MRE14P-7	81312	11	2
AN515-6R3	88044	5	17	MRE20P-7	81312	10	2
AN515-6R7	88044	3	13	MS15795-207	96906	14	12
AN515C6R4	88044	3	11	MS15795-207	96906	16	12
AN526-832R10	88044	14	11	MS16633-1006	96906	14	9
AN526-832R10	88044	16	11	MS16633-1006	96906	16	9
AN526C632R14	88044	2	10	MS20365-440	96906	14	5
AN526C632R8	88044	2	7	MS20365-440	96906	16	5
AN535-00-2	88044	19	3	MS20365-632	96906	2	9
AN535-2-2	88044	2	28	MS20365-632	96906	5	9
AN6227-5	88044	19	5	MS20365-832	96906	14	10
AN936-A4	88044	19	21	MS20365-832	96906	16	10
AN936-A6	88044	15	7	MS25036-50	96906	4	2
AN960-C6L	88044	18	10	MS25089-5CR	96906	2	14
A43-C30	72794	2	21	MS25231-313	96906	2	34
CM271 j-5	12697	4	24	MS25237-327	96906	2	13
CPA51 EE47K	81349	5	18	MS28027-1	96906	2	8
CP05A1KB104K1	81349	6	28	MS3057-10A	96906	15	2
CP05A1KB684K	81349	18	19	MS3057-12A	96906	4	16
CP05A1KE473K	81349	19	12	MS3057-12A	96906	6	2
CP53B1EB40K	81349	5	30	MS3057-6A	96906	4	21
C7-20P-VC/C38GC	11707	13	2	MS3057-6A	96906	9	2



PART NUMBER	FSCM	FIG. NO.	ITEM NO.	PART NUMBER	FSCM	FIG. NO.	ITEM NO.
NS3057-8A	96906	7	2	RS9006ROF	91637	5	37
NS3057-8A	96906	8	2	RV4LAXA900A	81349	3	14
NS3106A-14S-5P	96906	9	3	RV4LAXBAT52A	81349	3	15
NS3106A-14S-6S	96906	4	23	RV4NAXS0500A	81349	4	44
NS3106A-16S-1P	96906	7	3	RV4LAXSA252A	81349	4	35
NS3106A-18-1S	96906	15	3	S-308-84-08-00	79376	2	5
NS3106A-22-14P	96906	6	3	S-300-84-88-00-L	79376	2	12
NS3108-822-14S	96906	4	45	SM272ASN	80058	1	3
NS99106A-16S-1S	96906	8	3	TTX9	04879	5	35
NS99186-88D	96906	4	41	1N498	81349	19	16
NS99330-22	96906	3	12	1007-12	88245	2	11
NS90070-10	96906	2	31	109-2	00638	2	6
NS90070-7	96906	2	33	109-602	74970	3	2
NS90070-9	96906	2	32	109-603	74970	3	1
NS90287-10	96906	4	10	107062-01	39351	1	16
NS90287-12	96906	4	9	107063-01	39351	1	17
M263	24655	4	5	107064-01	39351	1	18
M3106A-14S-6P	96906	12	2	110006-01	39351	14	1
PA024-2878	71590	4	11	110006-01	39351	16	1
PA024-4262	71590	4	36	110008-01	39351	14	2
PA024-2190	71590	4	37	110008-01	39351	16	2
PA024-2272	71590	4	14	112999-01	39351	2	27
PA024-2273	71590	4	12	119385-01	39351	19	2
PP25850A1	21520	5	45	125-3-2G	94144	19	4
				126091-01	39351	1	16
PT02A-10-6SW	77820	4	22	1300C	88245	19	14
PT02A-12-10S	77820	4	19	131793-04	82415	3	5
PT02A-12-10SW	77820	4	20	134-5030-352-1	72619	4	3
PT02A-12-10SX	77820	4	30	134-5030-352-2	72619	4	1
PT02A-12-8S	77820	4	25	134-5030-352-3	72619	4	43
PT02A-12-8SW	77820	4	26	134-5030-352-4	72619	4	40
PT02A-12-8SX	77820	4	13	134-5030-352-5	72619	4	38
PT02A-14-18S	77820	4	29	134-5030-376	72619	4	4
PT02A-14-19S	77820	4	12	14188	88245	18	18
PT02A-16-26S	77820	4	33	1423	88245	5	16
PT02A-6S	77820	4	18	1560-4	00674	2	18
PT06A-10-6P	77820	9	1	182854	65092	2	1
PT06A-10-6PW	77820	12	1	182855	65092	2	39
PT06A-12-10P	77820	10	1	22A27H-22-40	72962	14	8
PT06A-12-10PW	77820	11	1	22A27H-22-40	72962	16	8
PT06A-12-10PX	77820	15	1	230-1054	71590	4	7
PT06A-12-8P	77820	14	14	230-1055	71590	5	39
PT06A-12-8PW	77820	13	1	3/4-6	95987	5	15
PT06A-12-8PX	77820	7	1	308002-07	12697	18	15
PT06A-12-8PY	77820	8	1	308002-10	12697	18	14
PT06A-14-18P	77820	16	14	31882	00779	18	5
PT06A-14-19P	77820	6	1	33-FHXX-11	31356	2	37
PT06A-16-26P	77820	17	1	340125	75915	4	8
PT92A-12-8SY	77820	4	17	4-RH-255	97965	3	9
Q5413-04-05	35351	19	23	5/16-6	95987	14	13
Q5413-06-04	35351	18	8	5/16-6	95987	16	13
Q5413-06-08	35351	18	3	5/16-6	95987	17	2
Q5413-06-08	35351	19	7	515415-01	39351	5	14
RC428F470J	81349	5	39	6121	15909	18	17
RC428F512V	81349	5	40	735079-01	39351	3	7
RC426F751J	81349	5	38	735088-01	39351	5	11
RN20X1001F	81349	19	15	735090-01	39351	5	28
RN20X200F	81349	19	19	735137-01-01	39351	1	2
RN65F5111D	81349	4	34	735138-01	39351	2	36
RN65F5211D	81349	4	32	735144-01	39351	2	22
RN65F5621D	81349	4	31	735148-01	39351	5	7
RN70B1131F	81349	5	20	735152-01	39351	14	7
RN70B1400F	81349	5	21	735152-01	39351	16	7
RN70B1500F	81349	5	2	736262-01	39351	18	9
RN70B1741F	81349	5	22	7661-K6	15605	2	35
RN70B1960F	81349	5	19	82130-19	39351	5	24
RN70B1962F	81349	5	41	990	39351	19	1
RN70B2003F	81349	5	3	990234-01	39351	2	30
RN70B4220F	81349	5	1	990234-06	39351	2	23
RN70B4991F	81349	5	4	990234-113	39351	2	29
RN70B64R4F	81349	5	6	990234-114	39351	2	24
RN80C1211F	81349	5	27	990234-117	39351	2	25
RN80B1901F	81349	5	26	990234-37	39351	2	3
RS2A190ROF	91637	5	29	990234-48	39351	2	26
RS2A2R000C	91637	19	17	990234-49	39351	2	17
RS2A3R000F	91637	5	34	990234-55	39351	2	2
RS2A50000F	91637	5	31	990234-56	39351	2	20
RS2A650ROF	91637	5	32	990302-13	39351	5	13
RS2A820ROF	91637	5	36	990302-18	39351	5	10
RS2A97R00F	91637	5	33	990694-02	39351	19	11

## SECTION IV

## NATIONAL STOCK NUMBER AND PART NUMBER INDEX

TM11-6629-503-24P

PART NUMBER	FSCM	FIG. NO.	ITEM NO.	PART NUMBER	FSCM	FIG. NO.	ITEM NO.
990709-01	35351	3	10	992550-01	35351	2	4
990791-01	35351	3	8	993472-11	35351	5	8
990792-01	35351	3	9	994200-01	35351	2	19
990839-01	35351	3	4	999312-02	35351	1	19
990840-01	35351	3	6	997206-01	35351	4	27
990897-01	35351	18	2	998980-01-01	35351	1	6
990911-01	35351	19	8	998985-01-01	35351	1	5
99213-01	35351	18	16	998986-01-01	35351	1	11
992131-01	35351	18	1	998987-01-01	35351	1	10
992132-01	35351	18	2	998940-01-01	35351	1	15
992133-01	35351	19	8	998941-01-01	35351	1	13
992134-01	35351	19	10	998942-01-01	35351	1	9
992135-01	35351	19	19	998946-01-01	35351	1	14
992137-01	35351	18	13	998961-01-01	35351	1	7
992138-01	35351	19	6	998962-01-01	35351	1	12
992140-01	35351	19	13	998964-01-01	35351	1	8
992411-01	35351	2	38	998966-01-01	35351	1	4

LATEST NATIONAL STOCK NUMBER ASSIGNMENT

STOCK NUMBER	FIG. NO.	ITEM NO.	STOCK NUMBER	FIG. NO.	ITEM NO.
5310-00-045-0591	3	12	5940-00-583-0512	5	16
5310-00-068-0551	14	5	5330-00-599-2619	19	5
5310-00-088-0651	16	5	5935-00-721-0491	15	3
5905-00-205-9027	5	20	5935-00-762-1002	4	29
5310-00-274-8682	18	7	5935-00-827-1545	4	33
5905-00-279-3527	5	39	5935-00-845-6764	6	7
5950-00-557-6988	4	5	5310-00-934-9739	19	20

LATEST PART NUMBER ASSIGNMENTS

PART NUMBER	FSCM	FIG. NO.	ITEM NO.
MILC39006-9	81349	5	23

ADDITIONAL LATEST NATIONAL STOCK NUMBER ASSIGNMENTS

STOCK NUMBER	FIG. NO.	ITEM NO.
5910-00-165-2785	5	23
5905-00-764-4003	4	32

By Order of the Secretary of the Army:

**BERNARD W. ROGERS**  
*General, United States Army*  
*Chief of Staff*

Official: **PAUL T. SMITH**  
*Major General, United States Army*  
*The Adjutant General*

**DISTRIBUTION:**

To be distributed in accordance with DA Form 12-36A, Organizational Maintenance requirements for AN/ASM-63 and SM-272-ASM.

RECOMMENDED CHANGES TO EQUIPMENT TECHNICAL MANUALS



**SOMETHING WRONG WITH THIS MANUAL?**

THEN... JOT DOWN THE DOPE ABOUT IT ON THIS FORM, TEAR IT OUT, FOLD IT AND DROP IT IN THE MAIL!

FROM: (YOUR UNIT'S COMPLETE ADDRESS)  
 Commander  
 Stateside Army Depot  
 ATTN: AMSTA-US  
 Stateside, N.J. 07703  
 DATE 10 July 1975

PUBLICATION NUMBER: TM 11-5840-340-12  
 DATE: 23 Jan 74  
 TITLE: Radar Set AN/SPC-76

BE EXACT... PIN-POINT WHERE IT IS				IN THIS SPACE TELL WHAT IS WRONG AND WHAT SHOULD BE DONE ABOUT IT:
PAGE NO.	PARA-GRAPH	FIGURE NO.	TABLE NO.	
2-25	2-28			<p>Recommend that the installation antenna alignment procedure be changed throughout to specify a 2° IFF antenna lag rather than 1°.</p> <p>REASON: Experience has shown that with only a 1° lag, the antenna servo system is too sensitive to wind gusting in excess of 10 knots, and has a tendency to rapidly accelerate and decelerate as it hunts, causing strain to the drive train. Hunting is minimized by adjusting the lag to 2° without degradation of operation.</p>
3-10	3-3		3-1	<p>Item 5, Function column. Change "2 db" to "3db."</p> <p>REASON: The adjustment procedure for the TRANS POWER FAULT indicator calls for a 3 db (500 watts) adjustment to light the TRANS POWER FAULT indicator.</p>
5-6	5-8			<p>Add new step f.1 to read, "Replace cover plate removed in step e.1, above."</p> <p>REASON: To replace the cover plate.</p>
		F03		<p>Zone C 3. On J1-2, change "+24 VDC to "+5 VDC."</p> <p>REASON: This is the output line of the 5 VDC power supply. + 24 VDC is the input voltage.</p>

TYPED NAME, GRADE OR TITLE, AND TELEPHONE NUMBER  
 SSG I. M. DeSpirito 999-1776

SIGN HERE:  
*SSG I. M. DeSpirito*

RECOMMENDED CHANGES TO EQUIPMENT TECHNICAL MANUALS



THEN... JOT DOWN THE DOPE ABOUT IT ON THIS FORM, TEAR IT OUT, FOLD IT AND DROP IT IN THE MAIL!

# SOMETHING WRONG WITH THIS MANUAL?

FROM: (YOUR UNIT'S COMPLETE ADDRESS)

DATE

PUBLICATION NUMBER

DATE

TITLE

BE EXACT... PIN-POINT WHERE IT IS

IN THIS SPACE TELL WHAT IS WRONG AND WHAT SHOULD BE DONE ABOUT IT:

PAGE NO.

PARA-GRAPH

FIGURE NO.

TABLE NO.

TYPED NAME, GRADE OR TITLE, AND TELEPHONE NUMBER

SIGN HERE:

DA FORM 2028-2 (TEST)  
1 AUG 74

P.S.--IF YOUR OUTFIT WANTS TO KNOW ABOUT YOUR MANUAL "FIND," MAKE A CARBON COPY OF THIS AND GIVE IT TO YOUR HEADQUARTERS.

FILL IN YOUR  
UNIT'S ADDRESS

FOLD BACK

DEPARTMENT OF THE ARMY

POSTAGE AND FEES PAID  
DEPARTMENT OF THE ARMY  
900-314



OFFICIAL BUSINESS

PENALTY FOR PRIVATE USE, \$300

Commander  
US Army Electronics Command  
ATTN: DRSEL-MA-Q  
Fort Monmouth, New Jersey 07703

FOLD BACK

REVERSE OF DA FORM 2020-2 (TEST)



FILL IN YOUR  
UNIT'S ADDRESS

FOLD BACK

DEPARTMENT OF THE ARMY

POSTAGE AND FEES PAID  
DEPARTMENT OF THE ARMY  
DDO-314



OFFICIAL BUSINESS

PENALTY FOR PRIVATE USE, \$300

Commander  
US Army Electronics Command  
ATTN: DRSEL-MA-Q  
Fort Monmouth, New Jersey 07703

FOLD BACK

REVERSE OF DA FORM 2026-2 (TEST)





FILL IN YOUR  
UNIT'S ADDRESS

FOLD BACK

DEPARTMENT OF THE ARMY

POSTAGE AND FEES PAID  
DEPARTMENT OF THE ARMY  
DOD-314



OFFICIAL BUSINESS  
PENALTY FOR PRIVATE USE, \$300

Commander  
US Army Electronics Command  
ATTN: DRSEL-MA-Q  
Fort Monmouth, New Jersey 07703

FOLD BACK

TEAR ALONG DOTTED LINE

REVERSE OF DA FORM 2029-2 (TEST)

DEPARTMENT OF THE ARMY  
US ARMY AG PUBLICATIONS CENTER  
1638 WOODSON ROAD  
ST. LOUIS, MISSOURI 63114  
OFFICIAL BUSINESS  
PENALTY FOR PRIVATE USE \$300

POSTAGE AND FEES PAID  
DEPARTMENT OF THE ARMY  
DDO 314

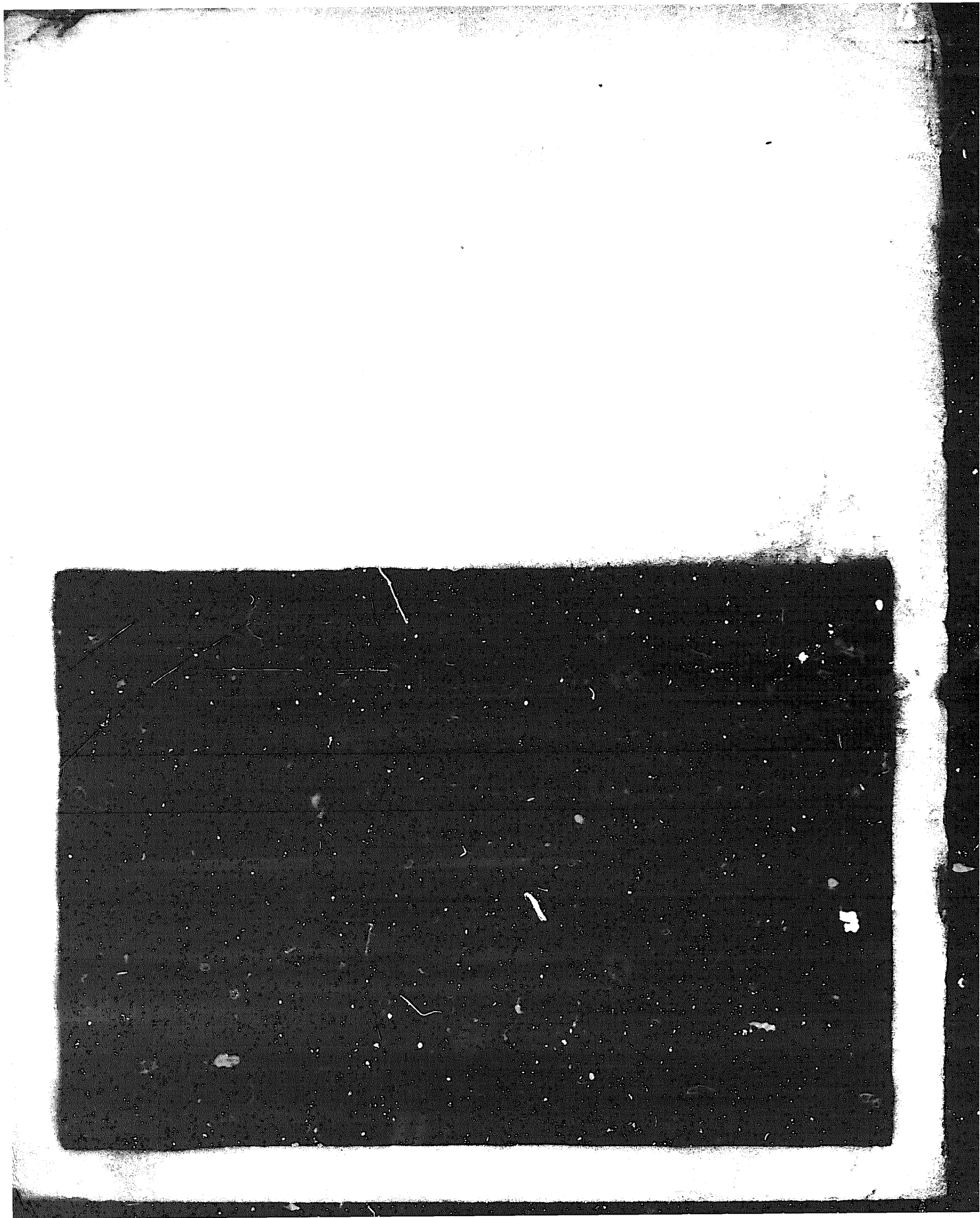


**END**

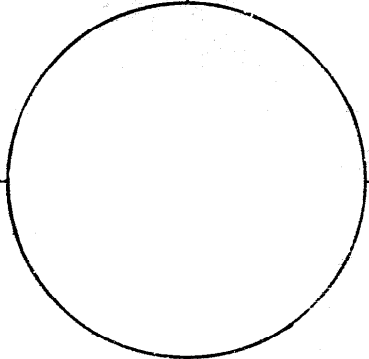
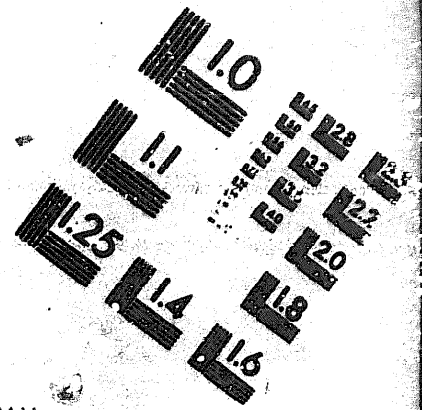
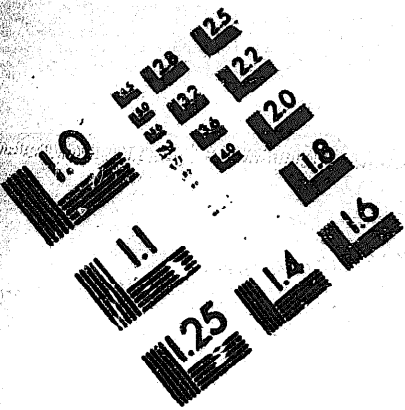
**7-25-83**

**DATE**





DEPARTMENT OF THE ARMY  
MICROFORM  
TEST TARGET



150 MM

1.0 mm (e= .31 mm)

ABCDEFGHIJKLMNQRSTU VWXYZ 1234567890  
abcdefghijklmnopqrstuvwxyz \$%& /%# 1/2 1/4 —=> x&@\*

1.5 mm (e= 1.09 mm)

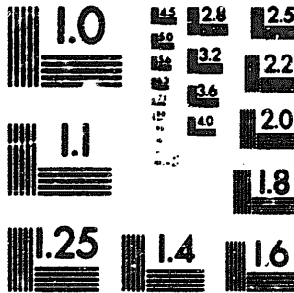
ABCDEFGHIJKLMNQRSTU VWXYZ 1234567890  
abcdefghijklmnopqrstuvwxyz \$%& /%# 1/2 1/4 —=> x&@\*

2.0 mm (e= 1.37 mm)

ABCDEFGHIJKLMNQRSTU VWXYZ  
abcdefghijklmnopqrstuvwxyz  
1234567890 \$%& /%# 1/2 1/4 —=> x&@\*

2.5 mm (e= 1.77 mm)

ABCDEFGHIJKLMNQRSTU VWXYZ  
abcdefghijklmnopqrstuvwxyz  
1234567890 \$%& /%# 1/2 1/4 —=> x&@\*



1.0 mm (e= .31 mm)

ABCDEFGHIJKLMNQRSTU VWXYZ 1234567890  
abcdefghijklmnopqrstuvwxyz \$%& /%# 1/2 1/4 —=> x&@\*

1.5 mm (e= 1.09 mm)

ABCDEFGHIJKLMNQRSTU VWXYZ 1234567890  
abcdefghijklmnopqrstuvwxyz \$%& /%# 1/2 1/4 —=> x&@\*

2.0 mm (e= 1.37 mm)

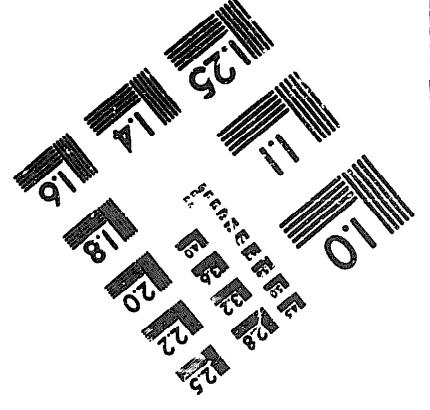
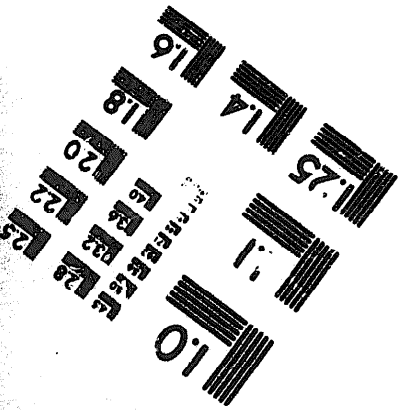
ABCDEFGHIJKLMNQRSTU VWXYZ  
abcdefghijklmnopqrstuvwxyz  
1234567890 \$%& /%# 1/2 1/4 —=> x&@\*

2.5 mm (e= 1.77 mm)

ABCDEFGHIJKLMNQRSTU VWXYZ  
abcdefghijklmnopqrstuvwxyz  
1234567890 \$%& /%# 1/2 1/4 —=> x&@\*



200 MM



250 MM